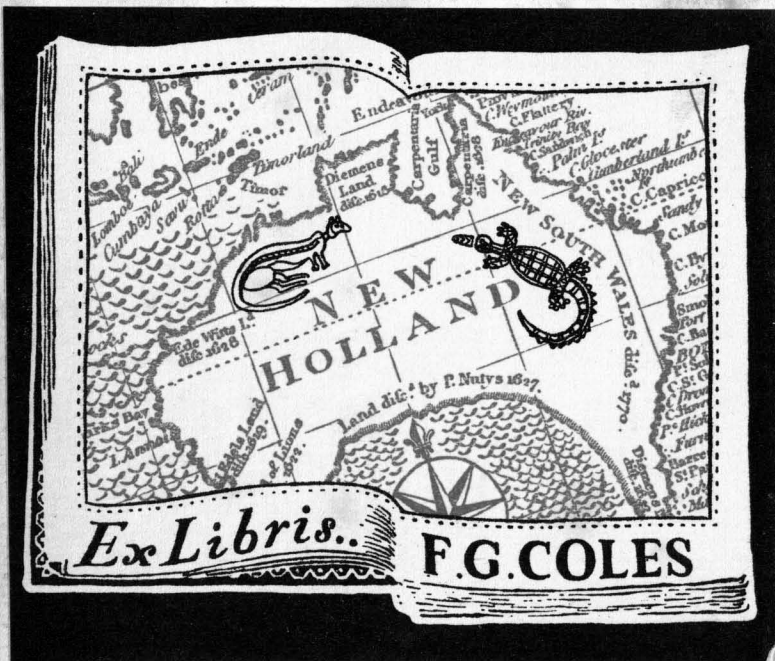
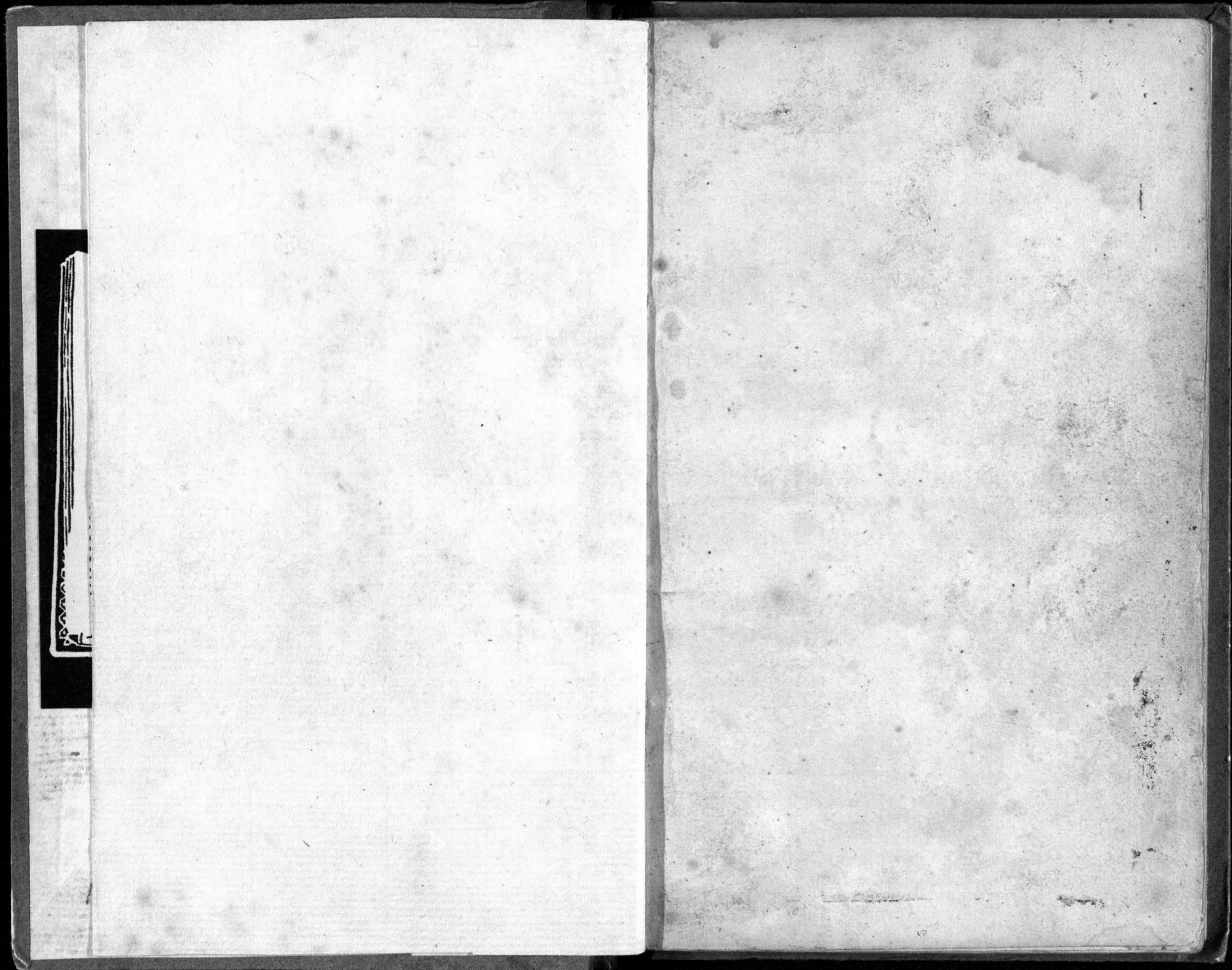


1

F 988

T.C.  
919.46  
BEN.







THE  
VAN DIEMEN'S LAND  
*POCKET*  
**ALMANACK,**

FOR THE YEAR OF OUR LORD  
MDCCCXXIV,  
*BEING BISSEXTILE, OR LEAP YEAR;*

AND THE  
FIFTH OF THE REIGN OF HIS MOST  
GRACIOUS MAJESTY,  
KING GEORGE THE FOURTH.

---

*PUBLISHED*  
UNDER THE SANCTION AND PATRONAGE OF  
HIS HONOR THE LIEUTENANT GOVERNOR,  
WILLIAM SORELL, ESQ.  
*&c. &c. &c.*

---

HOBART TOWN:  
COMPILED AND PRINTED BY ANDREW BENT,  
*Government Printer.*



## ADVERTISEMENT.

\*—\*  
**T**HE COMPILER, in publishing the first Almanack that has been yet printed in Van Diemen's Land, conceives he may be allowed to claim the indulgent consideration of his Readers.

The difficulties in the first attempt of any new work are numerous; and it must be reasonably admitted that some must have been experienced in this. The Compiler has nevertheless taken every means to make it as perfect as possible, though he does not presume to flatter himself that it is entirely free from imperfections;—But, as this publication will in all probability appear before the Public next year with many improvements made in it from the suggestion of friends, whose correspondence has already been kindly promised, the Compiler trusts that the severity of criticism will be somewhat softened; and the more so, when it is considered that it has this year been unavoidably compiled and printed chiefly in those hours which he has been able to snatch from the perplex duties of a laborious profession.

It is however a pleasure for him to declare his obligations individually to each of the Gentlemen who have favored him with their assistance in the completion of the work.— And, without any desire of boasting, either in the collection or arrangement of the matter, yet in the typographical execution of it, the Compiler feels confident he may claim a superiority over every other little work hitherto issued from the Derwent Press; and in the Public liberality he has reason to hope it will meet with that approbation he has endeavoured to make it deserve. Should it however fail in meeting that from a FEW, it is hoped it will be found useful to MANY; and with that expectation the Compiler respectfully sends forth into the world, for 1824, the *Van Diemen's Land Almanack*.

*Gazette Office, Hobart Town, Jan. 1, 1824.*

## CONTENTS.

	Page
Chronological Cycles.....	7
Ember Days .....	7
Moveable Feasts.....	7
Zodiacal Signs .....	7
Moon's Rising and Setting.....	7
Almanack .....	9 to 20
Colonial Gardening { The Field.....	21 to 28
Fruit Garden .....	29 to 32
The King's Lieutenant Governor of the Island..	33
Commandant of Port Dalrymple .....	33
Commandant of Macquarie Harbour .....	33
Secretary's Office .....	33
Lieutenant Governor's Court of Civil Jurisdiction	33 to 34
Commissioner of the Supreme Court at Sydney	34
Agent for the Colonies .....	34
Provost Marshal's Department.....	34
Notary Public .....	34
Commissariat Department.....	34
Church Establishment .....	35
Medical Department .....	35
Magistrates .....	35 to 36
Naval Officer's Department .....	36
Office of Colonial Revenue .....	36
Committee for Auditing Accounts of ditto .....	36
Acting Engineer's Department .....	36
Surveyor General of Crown Lands .....	36
Collector of Quit Rents .....	36
Superintendants in the Public Works .....	37
Public Schools .....	37
Sunday School .....	37
Police Establishment.....	38
Coroners .....	38
Bank of Van Diemen's Land.....	38
Printing Office.....	39
Attornies, Solicitors, and Proctors .....	39
Auxiliary Branch Bible Society .....	39



Agricultural Society .....	40
Australian Company .....	40
Post Offices .....	40 to 41
Distilleries and Breweries .....	41
Public Offices .....	41
Auctioneers and Appraisers .....	42
Marine Establishment .....	42
Military Establishment .....	43
Fees in the various Public Offices .....	43 to 50
Tolls of the Punt and other Ferries .....	51 to 54
Terms of the Lieutenant Governor's Court ....	54
Publications printed in the Colonies .....	54
Boundaries of the Districts within the Counties of Buckinghamshire and Cornwall .....	55 to 60
Distances of the Townships and Settlements from Hobart Town .....	61
Ditto from Kangaroo Point .....	61 to 62
Stages between Hobart Town and Launceston .....	62
Succession of Lieutenant Governors in Van Diemen's Land .....	63
Succession of Commandants at Port Dalrymple .....	64
Public Holidays .....	64
Sovereigns and Princes of Europe .....	65 to 68
The King's Ministers .....	69
Arrivals and Departures of Vessels from June 1816 to Dec. 1823 .....	70 to 84
Telegraphic Signals, made from Mount Nelson to Mulgrave Battery .....	85 to 86
Signals at Mount Nelson .....	87 to 88
Signals at Mount Louis .....	88 to 89
Bank Holidays .....	90
Established Rates of Labourers' Wages .....	91
APPENDIX .....	92
Additional Shipping Intelligence .....	93
A Ready Reckoner .....	94 to 95
Table of Measures and Weights .....	95 to 96

### CHRONOLOGICAL CYCLES.

DOMINICAL Cycles ....	D C	Solar Cycle .....	13
Lunar Cycle, or Golden Number .....	1	Roman Indiction .....	12
Epact .....	0	Julian Period .....	6537

### EMBER DAYS.

March .....	10, 12, 13	September .....	15, 17, 18
June .....	9, 11, 12	December .....	15, 17, 18

### MOVEABLE FEASTS.

Septuagesima Sun... Feb. 15	Low Sunday .....	25
Quinquagesima Sun. 29	Rogation Sunday ...	May 23
Ash Wednesday .... Mar. 3	Ascension Day .....	27
Midlent Sunday .... 28	Whit Sunday .....	June 6
Palm Sunday .....	Trinity Sunday .....	13
Easter Day .....	Advent Sunday ....	Nov. 28

### MOON'S RISING AND SETTING.

At 4 days old, it sets at, and shines till, about 10 at night,	15, at full, it rises about 6 in the evening,
5, ..... about ..... 11	16, at a quarter after .... 7
6, ..... about ..... 12	17, at half after .....
7, at near one in the morning.	18, ..... about ..... 10
	19, ..... about ..... 11
	20, ..... about ..... 12

☞ This Table is sufficiently accurate for the purpose it is wanted for—that of ascertaining Moonlight Evenings.

### SIGNS OF THE ZODIAC.

Aries .....	The Ram.	Libra .....	The Balance.
Taurus .....	The Bull.	Scorpio ....	The Scorpion.
Gemini .....	The Twins.	Sagittarius	The Archer.
Cancer .....	The Crab.	Capricornus	The Sea Goat.
Leo .....	The Lion.	Aquarius ..	The Waterbearer.
Virgo .....	The Virgin.	Pisces ....	The Fish.

The Domination of the MOON in Man's Body, passing under the Twelve Zodiacal Constellations.

Aries, Head and Face.	Libra, Reins and Loins.
Taurus, Neck and Throat.	Scorpio, Secret Members.
Gemini, Arms and Shoulders.	Sagittarius, Hips and Thighs.
Cancer, Breast and Stomach.	Capricornus, Knees & Hams.
Leo, Heart and Back.	Aquarius, Legs and Ancles.
Virgo, Bowels and Belly.	Pisces, Feet and Toes.



# JANUARY, 31 Days.

D. M. PHASES OF THE MOON.			
1	New Moon	5 hours 54 minutes,	afternoon.
9	First Quarter	10 — 23	afternoon.
16	Full Moon	6 — 37	afternoon.
23	Last Quarter	11 — 33	forenoon.
31	New Moon	1 — 35	afternoon.

D. M.	D. W.	Sundays and remarkable Days.	SUN rises   sets
1	Thursday	Circumcision	4 27 7 33
2	Friday		4 27 7 33
3	Saturday		4 28 7 32
4	Sunday	2d Sun. after Christmas	4 28 7 32
5	Monday		4 29 7 31
6	Tuesday	Epiphany	4 29 7 31
7	Wednesd.		4 30 7 30
8	Thursday		4 30 7 30
9	Friday		4 31 7 29
10	Saturday		4 31 7 29
11	Sunday	1st. Sunday after Epiph.	4 32 7 28
12	Monday		4 33 7 27
13	Tuesday		4 34 7 26
14	Wednesd.		4 35 7 25
15	Thursday	Duke of Gloucester, born	4 35 7 25
16	Friday	[1776	4 36 7 24
17	Saturday		4 37 7 23
18	Sunday	2d Sunday after Epiph.	4 38 7 22
19	Monday	Ciudad Rodrigo taken by	4 39 7 21
20	Tuesday	[storm, 1812	4 40 7 20
21	Wednesd.		4 41 7 19
22	Thursday		4 42 7 18
23	Friday		4 43 7 17
24	Saturday		4 44 7 16
25	Sunday	3d Sunday after Epiph.	4 45 7 15
26	Monday	[Conversion of St. Paul	4 46 7 14
27	Tuesday	D. of Sussex born, 1773	4 47 7 12
28	Wednesd.		4 48 7 12
29	Thursday	K. George IV. Ac. 1820	4 49 7 11
30	Friday	K. Charles I. Mart. 1649	50 7 10
31	Saturday	K. George IV. Pro. 1820	52 7 8

# FEBRUARY, 29 Days.

D. M. PHASES OF THE MOON.			
8	First Quarter	0 hours 50 minutes,	afternoon.
15	Full Moon	5 — 10 —	afternoon.
22	Last Quarter	3 — 2 —	forenoon.

D.M.	D. W.	Sundays and remarkable Days.	SUN rises   sets
1	Sunday	4th Sunday after Epiph.	4 53 7 7
2	Monday	Purification of Blessed	4 54 7 6
3	Tuesday	[Virgin Mary]	4 56 7 4
4	Wednesd.		4 57 7 3
5	Thursday		4 58 7 2
6	Friday		4 59 7 1
7	Saturday		5 16 59
8	Sunday	5th Sunday after Epiph.	5 26 58
9	Monday		5 46 56
10	Tuesday		5 56 55
11	Wednesd.		5 66 54
12	Thursday		5 76 53
13	Friday		5 96 51
14	Saturday	Valentine's Day	5 106 50
15	Sunday	Septuagesima	5 116 49
16	Monday	First Landing in the Co-	5 136 47
17	Tuesday	[lony, 1804]	5 146 46
18	Wednesd.		5 156 45
19	Thursday		5 176 43
20	Friday		5 186 42
21	Saturday		5 196 41
22	Sunday	Sexagesima	5 216 39
23	Monday		5 226 38
24	Tuesday	St. Matthias.—Duke of	5 236 37
25	Wednesd.	[Cambridge born, 1774]	5 256 35
26	Thursday		5 266 34
27	Friday	Battle of Orthes, 1814	5 286 32
28	Saturday		5 306 30
29	Sunday	Quinquagesima	5 316 29

# MARCH, 31 Days.

D. M. PHASES OF THE MOON.			
1	New Moon	8 hours 25 minutes,	forenoon.
8	First Quarter	11 — 56 —	afternoon.
15	Full Moon	3 — 24 —	afternoon.
22	Last Quarter	8 — 58 —	afternoon.
31	New Moon	0 — 49 —	forenoon.

D.M.	D. W.	Sundays and remarkable Days.	SUN rises   sets
1	Monday	St. David	5 33 6 27
2	Tuesday	Shrove Tuesday	5 34 6 26
3	Wednesd.	Ash Wednesday	5 36 6 24
4	Thursday		5 38 6 22
5	Friday		5 39 6 21
6	Saturday		5 40 6 20
7	Sunday	1st Sunday in Lent	5 41 6 19
8	Monday		5 42 6 18
9	Tuesday		5 44 6 16
10	Wednesd.		5 45 6 15
11	Thursday		5 47 6 13
12	Friday		5 49 6 11
13	Saturday		5 50 6 10
14	Sunday	2d Sunday in Lent	5 51 6 9
15	Monday		5 53 6 7
16	Tuesday		5 55 6 5
17	Wednesd.	St. Patrick's Day	5 56 6 4
18	Thursday		5 57 6 3
19	Friday		5 58 6 2
20	Saturday	Autumnal Equinox	6 6 6
21	Sunday	3d Sunday in Lent	6 15 59
22	Monday		6 25 58
23	Tuesday		6 45 56
24	Wednesd.		6 55 55
25	Thursday	Annunciation of Blessed	6 65 54
26	Friday	[Virgin Mary]	6 75 53
27	Saturday		6 95 51
28	Sunday	4th Sunday in Lent	6 115 49
29	Monday		6 135 47
30	Tuesday		6 145 46
31	Wednesd.		6 155 45



# APRIL, 30 Days.

D. M.	PHASES OF THE MOON.			
7	First Quarter	8 hours 5 minutes,	forenoon.	
14	Full Moon	1 — 34 —	forenoon.	
21	Last Quarter	3 — 57 —	afternoon.	
29	New Moon	2 — 12 —	afternoon.	

D.M.	D. W.	Sundays and remarkable Days.	SUN rises   sets	
1	Thursday		6 16 5	44
2	Friday		6 18 5	42
3	Saturday		6 19 5	41
4	Sunday	5th Sunday in Lent	6 21 5	39
5	Monday		6 22 5	38
6	Tuesday	Badajoz taken by storm,	6 23 5	37
7	Wednesd.	[1812]	6 25 5	35
8	Thursday		6 26 5	34
9	Friday		6 28 5	32
10	Saturday	Battle of Toulouse, 1814	6 29 5	31
11	Sunday	6th S. in L.—Palm Sun-	6 30 5	30
12	Monday	[day]	6 32 5	28
13	Tuesday	} Passion Week	6 34 5	26
14	Wednesd.		6 35 5	25
15	Thursday		6 37 5	23
16	Friday		6 38 5	22
17	Saturday	Good Friday	6 39 5	21
18	Sunday	Easter Day	6 41 5	19
19	Monday	Easter Monday	6 42 5	18
20	Tuesday	Easter Tuesday	6 43 5	17
21	Wednesd.		6 45 5	15
22	Thursday		6 46 5	14
23	Friday	St. George.—King's birth-	6 48 5	12
24	Saturday	[day kept]	6 49 5	11
25	Sunday	1st Sun. after E.—Low S.	6 50 5	10
26	Monday	[St. Mark.—Duchess	6 51 5	9
27	Tuesday	[of Gloucester, b. 1776	6 53 5	7
28	Wednesd.		6 54 5	6
29	Thursday		6 56 5	4
30	Friday		6 57 5	3

# MAY, 31 Days.

D. M.	PHASES OF THE MOON.			
6	First Quarter	2 hours 2 minutes,	afternoon.	
13	Full Moon	0 — 21 —	afternoon.	
21	Last Quarter	10 — 24 —	forenoon.	
29	New Moon	0 — 50 —	forenoon.	

D.M.	D. W.	Sundays and remarkable Days.	SUN rises   sets	
1	Saturday	St. Philip and St. James	6 58 5	2
2	Sunday	2d Sunday after Easter	7 1 5	
3	Monday		7 14	59
4	Tuesday		7 24	58
5	Wednesd.		7 34	57
6	Thursday	John Evangelist	7 44	56
7	Friday		7 54	55
8	Saturday		7 64	54
9	Sunday	3d Sunday after Easter	7 84	52
10	Monday		7 94	51
11	Tuesday		7 104	50
12	Wednesd.	Battle of Douro, 1809	7 114	49
13	Thursday		7 124	48
14	Friday		7 134	47
15	Saturday		7 144	46
16	Sunday	4th Sunday after Easter	7 154	45
17	Monday	[Battle of Albuera, 1811	7 164	44
18	Tuesday		7 174	43
19	Wednesd.		7 184	42
20	Thursday		7 194	41
21	Friday		7 204	40
22	Saturday	Ps. Elizabeth, born 1770	7 214	39
23	Sunday	5th Sunday after Easter	7 224	38
24	Monday		7 224	38
25	Tuesday		7 234	37
26	Wednesd.		7 244	36
27	Thursday	Ascension Day	7 254	35
28	Friday		7 264	34
29	Saturday	K. Charles II. res. 1660	7 274	33
30	Sunday	Sunday after Ascen. Day	7 284	32
31	Monday		7 284	32



# JUNE, 30 Days.

D. M.	PHASES OF THE MOON.		
4	First Quarter	6 hours 56 minutes,	afternoon.
12	Full Moon	0 — 25 —	forenoon.
20	Last Quarter	3 — 8 —	forenoon.
27	New Moon	9 — 26 —	forenoon.

D.M.	D. W.	Sundays and remarkable Days.	SUN rises   sets
1	Tuesday		7 29 4 31
2	Wednesd.		7 29 4 31
3	Thursday		7 30 4 30
4	Friday		7 30 4 30
5	Saturday	Duke of Cumberland b.	7 31 4 29
6	Sunday	Whit Sunday [1771	7 31 4 29
7	Monday	Whit Monday	7 32 4 28
8	Tuesday	Whit Tuesday	7 32 4 28
9	Wednesd.		7 32 4 28
10	Thursday		7 33 4 27
11	Friday	St. Barnabas	7 33 4 27
12	Saturday		7 33 4 27
13	Sunday	Trinity Sunday	7 34 4 26
14	Monday		7 34 4 26
15	Tuesday		7 34 4 26
16	Wednesd.	} Battle of Waterloo, 1815	7 35 4 24
17	Thursday		7 35 4 24
18	Friday		7 35 4 24
19	Saturday		7 36 4 25
20	Sunday	1st Sunday after Trinity	7 36 0 24
21	Monday	The Shortest Day.—Bat-	7 36 4 24
22	Tuesday	[tle of Vittoria, 1813	7 36 4 24
23	Wednesd.		7 36 4 24
24	Thursday	Nativity of St. John the	7 35 4 25
25	Friday	[Baptist	7 35 4 25
26	Saturday		7 35 4 25
27	Sunday	2d Sunday after Trinity	7 35 4 25
28	Monday		7 34 4 26
29	Tuesday	St. Peter	7 34 4 26
30	Wednesd.		7 34 4 26

# JULY, 31 Days.

D. M.	PHASES OF THE MOON.		
4	First Quarter	0 hours 18 minutes,	forenoon.
11	Full Moon	2 — 7 —	afternoon.
19	Last Quarter	5 — 44 —	afternoon.
26	New Moon	4 — 56 —	afternoon.

D.M.	D. W.	Sundays and remarkable Days.	SUN rises   sets
1	Thursday		7 34 4 26
2	Friday		7 33 4 27
3	Saturday		7 33 4 27
4	Sunday	3d Sunday after Trinity	7 33 4 27
5	Monday		7 32 4 28
6	Tuesday		7 32 4 28
7	Wednesd.		7 31 4 29
8	Thursday		7 31 4 29
9	Friday		7 30 4 30
10	Saturday		7 30 4 30
11	Sunday	4th Sunday after Trinity	7 29 4 31
12	Monday		7 29 4 31
13	Tuesday		7 28 4 32
14	Wednesd.		7 27 4 33
15	Thursday	St. Swithin	7 27 4 33
16	Friday		7 26 4 34
17	Saturday		7 25 4 35
18	Sunday	5th Sunday after Trinity	7 24 4 36
19	Monday	King George IV. crown-	7 23 4 37
20	Tuesday	[ed, 1821	7 22 4 38
21	Wednesd.		7 21 4 39
22	Thursday	Battle of Salamanca, 1812	7 20 4 40
23	Friday		7 19 4 41
24	Saturday		7 19 4 41
25	Sunday	6th Sun. after Trin.—St.	7 18 4 42
26	Monday	[James.—Duc. of Cam-	7 17 4 43
27	Tuesday	[bridge; born	7 16 4 44
28	Wednesd.	Battle of Talavera, 1809	7 15 4 45
29	Thursday	[Battle in the Pyrennees,	7 14 4 46
30	Friday	[1813	7 13 4 47
31	Saturday		7 12 4 48

# AUGUST, 31 Days.

D. M.	PHASES OF THE MOON.			
2	First Quarter	7 hours 42 minutes,	forenoon.	
10	Full Moon	5 — 19 —	forenoon.	
18	Last Quarter	6 — 19 —	forenoon.	
25	New Moon	0 — 14 —	forenoon.	
31	First Quarter	6 — 30 —	afternoon.	

D.M.	D. W.	Sundays and remarkable Days.	SUN rises   sets		
1	Sunday	7th Sun. after Trinity.—	7	11 4	49
2	Monday	[Lammas Day.—Bat-	7	9 4	51
3	Tuesday	[tle of the Nile, 1798	7	8 4	52
4	Wednesd.		7	7 4	53
5	Thursday		7	6 4	54
6	Friday	Transfiguration of Our	7	4 4	56
7	Saturday	[Lord	7	3 4	57
8	Sunday	8th Sunday after Trinity	7	2 4	58
9	Monday		7	5	
10	Tuesday		6	59 5	1
11	Wednesd.		6	58 5	2
12	Thursday	K. George IV. born 1762	6	57 5	3
13	Friday		6	56 5	4
14	Saturday		6	55 5	5
15	Sunday	9th Sunday after Trinity	6	54 5	6
16	Monday	Duke of York born, 1763	6	52 5	8
17	Tuesday	Duchess of Kent, born	6	51 5	9
18	Wednesd.		6	50 5	10
19	Thursday		6	48 5	12
20	Friday		6	47 5	13
21	Saturday	Duke of Clarence b. 1765	6	46 5	14
22	Sunday	10th Sunday after Trinity	6	44 5	16
23	Monday		6	43 5	17
24	Tuesday	St. Bartholomew	6	42 5	18
25	Wednesd.		6	40 5	20
26	Thursday		6	39 5	21
27	Friday		6	38 5	22
28	Saturday		6	36 5	24
29	Sunday	11th Sun. after Trin.—St.	6	35 5	25
30	Monday	[John the Bapt. beheaded	6	34 5	26
31	Tuesday		6	32 5	28

# SEPTEMBER, 30 Days.

D. M.	PHASES OF THE MOON.			
8	Full Moon	9 hours 26 minutes,	afternoon.	
16	Last Quarter	5 — 4 —	afternoon.	
23	New Moon	3 — 14 —	forenoon.	
30	First Quarter	9 — 19 —	forenoon.	

D.M.	D. W.	Sundays and remarkable Days.	SUN rises   sets		
1	Wednesd.		6	30 5	30
2	Thursday		6	29 5	31
3	Friday		6	27 5	33
4	Saturday		6	26 5	34
5	Sunday	12th Sunday after Trinity	6	25 5	35
6	Monday		6	23 5	37
7	Tuesday		6	22 5	38
8	Wednesd.	Nativity of the B. Virgin	6	20 5	40
9	Thursday	[Mary	6	19 5	41
10	Friday		6	18 5	42
11	Saturday		6	16 5	44
12	Sunday	13th Sunday after Trinity	6	15 5	45
13	Monday		6	14 5	46
14	Tuesday		6	12 5	48
15	Wednesd.		6	11 5	49
16	Thursday		6	9 5	51
17	Friday		6	7 5	53
18	Saturday		6	5 5	55
19	Sunday	14th Sunday after Trinity	6	3 5	57
20	Monday		6	1 5	59
21	Tuesday	St. Matthew.—Vernal E-	6	6	
22	Wednesd.	[quinox	5	59 6	1
23	Thursday		5	58 6	2
24	Friday		5	57 6	3
25	Saturday		5	56 6	4
26	Sunday	15th Sunday after Trinity	5	55 6	5
27	Monday	Batt. of Fonte Guinaldo,	5	54 6	6
28	Tuesday	[1811	5	53 6	7
29	Wednesd.	St. Michael.—Queen of	5	51 6	9
30	Thursday	[Wirtemburgh b. 1766	5	50 6	10



# OCTOBER, 31 Days.

D. M. PHASES OF THE MOON.			
8	Full Moon	1 hours 43 minutes,	afternoon.
16	Last Quarter	2 — 12 —	forenoon.
22	New Moon	5 — 50 —	afternoon.
30	First Quarter	3 — 49 —	forenoon.

D. M.	D. W.	Sundays and remarkable Days.	SUN rises   sets
1	Friday		5 49 6 11
2	Saturday		5 47 6 13
3	Sunday	16th Sunday after Trinity	5 46 6 14
4	Monday		5 45 6 15
5	Tuesday		5 44 6 16
6	Wednesd.		5 42 6 18
7	Thursday		5 41 6 19
8	Friday		5 39 6 21
9	Saturday		5 38 6 22
10	Sunday	17th Sunday after Trinity	5 36 6 24
11	Monday	Battle of Camperdown,	5 35 6 25
12	Tuesday	[1797]	5 34 6 26
13	Wednesd.		5 32 6 28
14	Thursday		5 30 6 30
15	Friday		5 28 6 32
16	Saturday		5 27 6 33
17	Sunday	18th Sunday after Trinity	5 26 6 34
18	Monday	St. Luke	5 25 6 35
19	Tuesday		5 24 6 36
20	Wednesd.		5 22 6 38
21	Thursday	Battle of Trafalgar, 1805	5 20 6 40
22	Friday		5 19 6 41
23	Saturday		5 18 6 42
24	Sunday	19th Sunday after Trinity	5 17 6 43
25	Monday		5 16 6 44
26	Tuesday		5 14 6 46
27	Wednesd.		5 12 6 48
28	Thursday	St. Simon and St. Jude	5 10 6 50
29	Friday		5 9 6 51
30	Saturday		5 7 6 53
31	Sunday	20th Sunday after Trinity	5 6 6 54

# NOVEMBER, 30 Days.

D. M. PHASES OF THE MOON.			
7	Full Moon	5 hours 29 minutes,	forenoon.
14	Last Quarter	10 — 5 —	forenoon.
21	New Moon	5 — 48 —	forenoon.
29	First Quarter	0 — 42 —	forenoon.

D. M.	D. W.	Sundays and remarkable Days.	SUN rises   sets
1	Monday	All Saints	5 56 55
2	Tuesday		5 46 56
3	Wednesd.	Princess Sophia, b. 1777	5 26 58
4	Thursday	K. William landed 1688	5 7 1
5	Friday	Popish Plot 1605.	4 59 7 1
6	Saturday		4 58 7 2
7	Sunday	21st Sunday after Trinity	4 57 7 3
8	Monday	Princess Augusta Sophia	4 56 7 4
9	Tuesday	[born, 1768]	4 55 7 5
10	Wednesd.		4 54 7 6
11	Thursday	St. Martin.—Battle of	4 52 7 8
12	Friday	[Nivelle, 1813]	4 51 7 9
13	Saturday		4 49 7 11
14	Sunday	22d Sunday after Trinity	4 48 7 12
15	Monday		4 47 7 13
16	Tuesday		4 46 7 14
17	Wednesd.		4 45 7 15
18	Thursday		4 44 7 16
19	Friday		4 43 7 17
20	Saturday		4 42 7 18
21	Sunday	23d Sunday after Trinity	4 41 7 19
22	Monday		4 40 7 20
23	Tuesday		4 39 7 21
24	Wednesd.		4 38 7 22
25	Thursday		4 37 7 23
26	Friday		4 36 7 24
27	Saturday		4 35 7 25
28	Sunday	Advent Sunday	4 34 7 26
29	Monday		4 33 7 27
30	Tuesday	St. Andrew	4 32 7 28



## DECEMBER, 31 Days.

## D. M. PHASES OF THE MOON.

6	Full Moon	8 hours 12 minutes,	afternoon.
13	Last Quarter	5 ——— 31 ———	afternoon.
20	New Moon	8 ——— 27 ———	afternoon.
28	First Quarter	10 ——— 5 ———	afternoon.

D. M.	D. W.	Sundays and remarkable Days.	SUN rises   sets
1	Wednesd.		4 32 7 28
2	Thursday		4 32 7 28
3	Friday		4 31 7 29
4	Saturday		4 31 7 29
5	Sunday	2d Sunday in Advent	4 30 7 30
6	Monday		4 30 7 30
7	Tuesday		4 29 7 31
8	Wednesd.	Conception of B. Virgin	4 29 7 31
9	Thursday	[Mary	4 28 7 32
10	Friday		4 28 7 32
11	Saturday		4 27 7 33
12	Sunday	3d Sunday in Advent	4 27 7 33
13	Monday		4 26 7 34
14	Tuesday		4 26 7 34
15	Wednesd.		4 26 7 34
16	Thursday		4 25 7 35
17	Friday		4 25 7 35
18	Saturday		4 25 7 35
19	Sunday	4th Sunday in Advent	4 24 7 36
20	Monday		4 24 7 36
21	Tuesday	St. Thomas.—The Longest	4 24 7 36
22	Wednesd.	[Day	4 24 7 36
23	Thursday		4 24 7 35
24	Friday		4 25 7 35
25	Saturday	CHRISTMAS DAY	4 25 7 35
26	Sunday	1st Sun. after Christmas.	4 25 7 35
27	Monday	St. John [St. Stephen	4 25 7 35
28	Tuesday	Innocents.	4 26 7 34
29	Wednesd.		4 26 7 34
30	Thursday		4 26 7 34
31	Friday		4 27 7 33

## COLONIAL GARDENING.

## SEASONS.

SPRING.—September, October, and November.

SUMMER.—December, January, and February.

AUTUMN.—March, April, and May.

WINTER.—June, July and August.

## Potatoes.

POTATOES are cultivated in this Island with unbounded success, particularly when the soil and season are both well chosen.—I would recommend that a garden crop of this useful vegetable should be put in about the 10th of September, if the ground should lay near the seaboard, or any way not subject to the frost; but by constant attention, the potatoe may be so protected by moulding, as to avoid this inconvenience. A field crop may be put in, with every prospect of success, from the beginning of October to the latter end of November, and even as late as the 10th of December; but the earlier sowings are found most generally the best.—Care should be ta-

ken that large perfect sets be selected for the earlier plantings; but it is remarked, that, in this climate, a much lesser quantity of seed will suffice for a general crop than in Europe.—A garden winter crop may be planted in January or February. The sets made choice of should be the produce of the last winter crop; and potatoes uncut must be preferred for the seed, as those cut are apt to perish in the ground from the rains, while those put in whole are almost sure to come up, and bring forth a good crop.—The produce of potatoes in this Island is very considerable; and there is scarcely a year but what brings a plentiful crop to the grower, who is thereby well paid for the planting.—New potatoes by the 1st of December.

#### *Cabbages.*

Cabbages will do well in almost any season, but for a summer crop the seed should be sown about the latter end of June or beginning of July—which will enable them to be transplanted about the 1st or middle of September.—It is recommendable, that some short well-rotted manure should be put in the drills, and covered lightly over with mould, and the plants dibbled in;—the hilling then as occasion may require; but for a winter crop, the seed should be sown about the latter end of January, which will enable them to be transplanted in the first week of March.

#### *Cauliflowers.*

In this country cauliflowers are planted in the months of August and September, and are brought to great perfection without that trouble and expense of using glasses, as is customary in England to shade them from the sun, frosts, and rains. A bed should nevertheless be prepared for them in a well sheltered part of the garden, where it lies well to the sun, with a free access to air, and in rich ground; taking care to select the stoutest plants, and to bury plenty of good horse dung regularly at the roots, digging the ground one spade deep.—In transplanting cauliflowers, put them thirty inches apart, or a yard distance each way; which, to make the best of the ground, will enable the gardener to sow, on the same piece, a crop of spinage and radishes, which will turn out to good account, without the least retarding the growth of the cauliflower plants; for by the time they begin to advance any thing considerably, the radishes and spinage will be all cleared off for use; but when this is intended, it is most eligible to sow the seed before the cauliflowers are planted—a week or fortnight, or more, if thought necessary.

#### *Broccoli.*

This esculent plant may be sown and treated exactly the same as cabbages.



*Pease and Beans.*

Pease and beans may be cultivated towards the seaboard in almost any season; but for a general crop, throughout the interior and places subject to frost, they should not be planted earlier than the 1st or middle of July; and it is recommendable, that the ground should be as strong as possible, and even that a little manure should be added.—Pease, in this Island, particularly beans, grow much less to stalk than in Europe, but are nevertheless very productive.—A later crop than what is here recommended may often prove good, but is nevertheless very uncertain, from an insect which is frequently known to destroy the blossom.

It might not be amiss to remark here, that as this country is given so much to weeds, the beans had better be set in one-row drills, which will render rubbish innocuous by moulding.—New pease in October.

*Carrots and Parsnips.*

Carrots and parsnips are best when sown in brush or made land, and should be put in early in the month of July. These vegetables grow to an extraordinary size in this Island, with almost an entire certainty of a crop.—The beds prepared for them should be thrown somewhat higher than in Europe, as it is observable that those sown in this way grow the largest.

*Onions.*

This climate and soil are particularly adapted for this highly useful vegetable, and they grow largest when sown where sheep have been folded; but are nevertheless to be raised to perfection in any ground which has been well worked and manured. They should be put in, in the last week of April, or beginning of May, as they will then have acquired a considerable growth before the winter frosts appear, and as the frosts set in sharp and unexpected in this country in the back end of summer, a later sowing will run great risk of being entirely destroyed from this cause; or, on the other hand, be stinted from having attained no considerable growth before the drought of the ensuing summer.—The potatoe onion is extremely productive in this Island, and requires to be planted out in the latter end of autumn.

*Leeks.*

Leeks are generally fit to transplant in the month of April,—putting them out in rows a foot apart, in beds about four feet broad.—In sowing leeks let the same rule be observed as for sowing onions.

*Shallots.*

Shallots may be planted after the same manner as leeks, either with a dibble or in drills drawn with a hoe.



*Celery.*

Celery seed should be sown so as to be sufficiently large to transplant in the month of January.

*Radishes.*

Radishes may be sown in almost any month of the year.

*Lettuces.*

Lettuces, which have stood the winter, should be put out in August or September; and planted in one spot of rich ground, a foot apart, giving a little water to them as soon as planted.

*Horse Radish.*

For this plant, which is propagated by cuttings of the root, choose as light and deep a soil as the garden affords; which trench regularly one good spade deep at least; letting the roots be about a foot asunder.

*Turnips.*

Turnips grow to an extraordinary size in this country, when the ground has been properly dressed for them. A winter crop is found most available; the ground being already prepared, care should be taken to sow the seed, if possible, in the month of January, provided there shall be any considerable wet; but if there should not, the sowing should be deferred till the ground be properly moistened. A summer crop is

hardly in soon, except for the table, and may be put in about the 1st or middle of July.

*Artichoke.*

This esculent plant does not grow very large here.—They are raised by sets or cuttings of the roots; preparing the sets and planting them as directed for potatoes. Let them be planted in rows a yard asunder, four or five inches deep, and eighteen inches or two feet distance in the rows.

*Asparagus.*

For a bed of this choice vegetable, which is grown here with much success, the ground should be prepared well in September, and richly manured with well rotted stable dung before sown. When the bed diminishes in strength, as will be the case in the course of years, a new bed should be set out, believing the old one to be worn out.—For digging or forking the bed, you should be provided with a proper fork, which ought to have three tines about nine inches long,—the tines to be perfectly flat, and about an inch broad, pretty thin, and the ends of them rounded and blunt. In forking the bed, care should be taken to well loosen it in every part to a moderate depth, but at the same time to be very cautious not to go deep so as to wound the crowns of the roots. This work of forking is most necessary to be done every spring, to improve and loosen the ground, and to give free liberty

for the buds to shoot up, as well as to give free access to the sun, air, and rains. In making plantations of these plants, one great article to be considered is, to make choice of proper soil, which must not be wet nor too strong or stubborn, but such as is moderately light and pliable, so as it will readily fall to pieces in digging or raking, and in a situation that enjoys the full sun.—Let the beds be well cleared and kept free from weeds, and this must be done by a very careful hand-weeding.

#### *Cucumbers, Pumpkins, and Melons.*

With a little care these plants may be grown in this country with much success.—They can be raised under glass in the spring, and in the open air in summer, either in hot-beds, or by the assistance of dung in open ground. Make the beds for forward crops in August, and prepare the ground for a later crop in September or beginning of October. The plants must be raised on a seed-bed, and then transplanted upon hot-beds, which should be made about three feet high, and secured from the frosts by a frame or other covering being laid over them at night.

As all kinds of vegetables pay uncommonly well the expense and labour of planting, it would be recommendable for the small settler, residing near Hobart Town, to give his particular attention to their culture; for too much time could not be bestowed to this occupation, as it would afford him a more certain means of supporting his family, by supplying the shipping and the town, than perhaps growing any thing else.

## THE FRUIT GARDEN.

### *Currants & Gooseberries.*

These trees grow extremely luxuriant, and are now introduced into every garden.

### *Raspberries.*

This pleasant flavoured fruit is of certain produce, and in this country extremely brittle.—They should be planted in bunches, at least two yards apart, and the ground kept well hoed between them: manure is not necessary, although it is frequently and not improperly put to them.—The situation for these plants should be sheltered from the sun, and in a rich moist ground.

### *Strawberries.*

Strawberries grow wonderfully to leaf in this country, and are not of certain produce; but the fruit is always very fine. The ground should be if possible of a light sandy barren nature, laying high, and care should be taken not to allow the tendrils of this plant to extend too far, as this is said, by experienced gardeners, to be an infallible preventative of their bearing. This plant seems somewhat whimsical in its produce, and is frequently known to bear only in odd seasons. The plants must be more frequently renewed than in Europe.

### *The Green Gage.*

This remarkably luscious plum is now becom-



ing plentiful in the colony, and is this year very productive.

### *The English Cherry.*

This fruit appears to be exceedingly well adapted for the climate; for cherries, of the Kentish sort, are now growing in several places, with an appearance truly delightful to the eye.

### *The Apple and the Peach.*

These fruits are two of the most plentiful of any kind in the Island, and are now rapidly improving in quality.—The apple-tree in this country is so astonishingly fruitful, that instances have been known of very young trees having borne fruit the season immediately after they were grafted, before the grafts and stocks were well united, or that the clay and bandages could be taken off or loosened—a circumstance almost incredible to a European.

### *Pears.*

This delicate eating fruit, although not yet very plentiful in the colony, is nevertheless productive in its growth.

### *Quinces.*

The quince-tree bears abundance of fruit in this colony.

### *The Mulberry.*

This highly flavoured fruit, after being properly pruned to keep it open in the heart, bears equally as much, if not more fruit than it does in England.—The black sort, intro-

duced into the colony, is the best for general culture.

Walnuts, filberts, and cob nuts have not yet borne.—The fig-tree bears much fruit; but as it does not ripen before autumn, the frosty mornings then set in, and cut off all this kind of fruit.

### *Grapes.*

The produce of grapes in this country is astonishingly great, and they are exceedingly fine in quality; and this fruit will no doubt in the course of a few years be of considerable benefit to the colony, not only in making wines for our own consumption, but for exportation.

Vines against walls and in vineyards, being in the month of May desolated, or the leaves fallen, may have their winter pruning and nailing, &c. which business consists of a general regulation, both among the young and old wood.—In pruning vines, the general branches are to be left on in every part, with a proper supply of the last summer's shoots below and above, both in laterals and terminals, as principal bearers to produce the fruit next year; and let all the irregular and superabundant shoots be cut out close; cutting out also some part of the former year's bearers, on particular occasions, such as either were too close, or too much advanced in length in their respective places, &c. pruning them less or more down, either to some eligible lateral shoot to remain for a terminal or leader thereto, as every branch, whether remaining entire or shortened, should have a young shoot for a terminal, or occasionally some parts where too crowded cut quite out or pruned as above, as it may seem expedient; and likewise casual, long advanced, naked old wood, unfurnished with young, should be pruned similarly, in order to give proper room for training the more eligible branches and general supply of bearing shoots, &c.—For the last summer's shoots, which are now left, will, in the spring, produce from every eye or bud a young shoot, and on these young shoots the grapes are produced the same summer; for vines seldom produce immediate bearing shoots from any but one-year old wood.

### *Transplanting.*

May and June are the proper months for removing fruit trees of all descriptions; as they will then carry fruit to a surprising degree, to what is found to be the case in other countries; but any time between the 1st of May and middle of September will ensure their growing.—Grafting is generally performed with best success in the last fortnight of September. It is particularly noted, that all the native shrubs of this country are difficult to transplant—requiring to be lifted with the ball—as well as being early in the winter; but Sir JOHN EVELYN'S maxim, although reversed in this country, will come in well here—"Plant trees at All hallowmas, and command them to grow;—plant trees at Whitsuntide, and entreat them to grow."

Sweet-brier, English hawthorn, the broom, the furze, and in fact every other plant and shrub grows most luxuriant in this climate, perhaps more so than in any other part of the known world.—The English oak, and a great number of other favourite trees are also growing in many places here in the greatest luxuriance.—Among those lately introduced into the colony are—the sweet Spanish chesnut, as well the common horse chesnut, the beach, the ash, the fir, and the willow.

### *Gather Ripe Seeds.*

Gather seeds in dry weather, of such plants as ripen, as lettuce, leeks, onions, cauliflowers, cabbages, &c. to prevent their being attacked from the rains or mildew.

### *Destroy Weeds.*

Take advantage of a dry day for this work, as a person may then soon go over a great deal of ground with a sharp hoe. Every weed that is suffered to stand to scatter its seed upon the ground, lays the foundation of hundreds for the year to come; therefore every opportunity should be taken to destroy them before they arrive to that maturity. Never suffer large weeds to lay upon the ground, when they have been hoed down, but rake them up and burn them, which will enrich the land.

The French Economical Journal says, that the following is an infallible method of guarding cabbages from the depredation of caterpillars:—Sow a belt of hemp-seed round the borders of the ground where the cabbages are planted, and although the neighbourhood be infected with caterpillars, the space inclosed by the hemp will be perfectly free, and not one of these vermin will approach.

## CIVIL ESTABLISHMENT,

AND

## PUBLIC INSTITUTIONS,

IN THE DEPENDENCY OF

## VAN DIEMEN'S LAND.

SEAT OF LOCAL GOVERNMENT, HOBART TOWN.

**LIEUTENANT GOVERNOR** of the SETTLEMENTS,  
**HIS HONOR,**  
**WILLIAM SORELL, ESQUIRE.**

*Commandant of Port Dalrymple*—Lieutenant Colonel  
**CAMERON**, of His Majesty's 3d Regiment (Bufs).

*Commandant of Macquarie Harbour*—Lieutenant **SAMUEL**  
**WRIGHT**, of His Majesty's 3d Regiment (Bufs).

### *Secretary's Office.*

Secretary to His Honor the Lieutenant Governor—  
**Henry Edward Robinson, Esq.** Captain in the 48th  
 Regiment.  
 Principal Clerk—  
 Assistant Clerk—

### *Lieutenant Governor's Court.*

The Honourable the Deputy Judge Advocate—**Edward**  
**Abbott, Esquire.**

Members—Two Inhabitants of the Island, specially appointed by Precept from His Honor the Lieutenant Governor.



Solicitors—

{	George Cartwright,	} Esquires.
	Hugh Ross,	
	Frederic Dawes,	
	William Williamson,	

Clerk and Registrar of the Court—Edward Abbott, Gen.  
Clerk in the Deputy Judge Advocate's Office—Mr. John Abbott.

Clerk at the Deputy Judge Advocate's Sub-Office,  
Port Dalrymple—Mr. Charles Abbott.

Crier of the Court—Mr. William Baker.

*Commissioner of the Supreme Court at Sydney.*

Thomas Bell, Esq. J. P., C. B., Major in the Army, and  
Captain in the 48th Regiment.

*Agent for New South Wales and Van Diemen's Land.*  
Edward Barnard, Esq., residing in England.

*Provost Marshal's Department.*

Provost Marshal—John Beamont, Esq.

Deputy Provost Marshal—Mr. Timothy Bentley.

Ditto at Port Dalrymple—Mr. Charles Abbott.

Bailiff and Officer—William Poucher.

*Notary Public of Van Diemen's Land, and one of the Solicitors of the Supreme Court at Sydney.*

George Cartwright, Esq.

*Commissariat Department.*

Hobart Town—

{	Assistant Commissary General Moodie	} Store-keepers
	Mr. J. L. Roberts, Clerk.	
	Mr. Robert Neill,	
	Mr. Adam Thomson,	

Launceston—

{	Dep. Assist. Commy. General Hull.
	Mr. Joseph Boney, Assist. Store-keeper.

George Town—

{	Mr. Andrew Allan, Store-keeper.
	Mr. Wm. Kneale, Assist. Store-keeper.

New Norfolk—

{	Mr. Hen. Condell, Assist. Store-keeper.
	Mr. J. C. Parsons, Store-keeper.

Macquarie Harbour—

{	Mr. J. C. Parsons, Store-keeper.

*Church Establishment.*

Rev. William Bedford, Colonial Chaplain, Hobart Town.

Rev. John Youl, ditto, Port Dalrymple.

Rev. Peter Conolly, Roman Catholic Clergyman, Hobart Town.

Rev. Archibald Macarthur, Presbyterian ditto, ditto.

Vergers of St. David's Church—Mr. T. R. Crowder.

Chaplain's Clerk—Mr. William Worthy.

Conductor of Music—Mr. William Livingstone.

Beadle and Gravedigger—William Bradshaw.

*Medical Department.*

Surgeon at Hobart Town—James Scott, Esq. R. N.

Surgeon at Launceston—R. R. Priest, Esq.

Assistant Surgeon at George Town—Mr. R. W. Owen.

Assistant Surgeon at Hobart Town—Mr. H. Crockett.

Assistant Surgeon at Sorell Town—Mr. James Spence.

Assistant Surgeon at Macquarie Harbour—Mr. Robert Garratt.

*Magistrates.*

(WITH THEIR PLACES OF RESIDENCE.)

Chairman to the Bench of Magistrates at Hobart Town—  
EDWARD ABBOTT, Esq. Deputy Judge Advocate of  
Van Diemen's Land.

At Hobart Town—

{	Rev. Robert Knopwood, M. A.
	A. W. H. Humphrey, Esq. Superintendent of Police.
	Major Thomas Bell, C. B., 48th Regiment.
	Edward Lord, Esq.
	George Frederick Read, Esq.

Clerk to the Bench of Magistrates at Hobart Town—  
Mr. Henry James Emmett.

Pitt Water—James Gordon, Esq.

Coal River—George Weston Gunning, Esq.

Spring Hill—Thomas George Gregson, Esq.

River Clyde—

{	Charles Rowcroft, Esq.
	Patrick Wood, Esq.

River Plenty—George Thomson, Esq.

Port Dalrymple. { Lieutenant Colonel Cameron, 3d Regiment (Commandant), Launceston.  
 Thomas Archer, Esq., Lake River.  
 James Cox, Esq., Gordon's Plains.  
 Andrew Barclay, Esq., Camden Vale.  
 P. A. Mulgrave, Esq., Superintendent of Police, Launceston.  
 T. C. Simpson, Esq., Launceston.  
 Clerk to the Bench of Magistrates at Launceston—Mr. Robert Wales.  
 Lieutenant Samuel Wright, 3d Regiment, (Commandant) Macquarie Harbour.

#### *Naval Officer's Department.*

Naval Officer—Edward Foord Bromley, Esq., R. N.  
 Ditto, at Launceston—Lieutenant Thomson, R. M.  
 Wharfinger at Hobart Town—Mr. Lawrence Reed.  
 Clerk to the Naval Officer—Mr. B. Broughton.

#### *Colonial Revenue.*

Treasurer—Edward Foord Bromley, Esq.  
 Clerk to ditto—Mr. B. Broughton.

*Committee for Auditing the Accounts of the Colonial Fund.*  
 The Deputy Judge Advocate,  
 The Acting Engineer, and  
 The Commissariat Officer in Charge.

#### *Acting Engineer's Department.*

Acting Engineer and Inspector of Government Public Works at Hobart Town—Major Thomas Bell, C. B., 48th Regiment.  
 Inspector of Public Works at Port Dalrymple—Lieut. Kenworthy, 48th Regiment.

#### *Surveyor of Crown Lands.*

Deputy Surveyor General—George Wm. Evans, Esq.  
 Assistant Surveyor—Mr. Thomas Scott.

*Collector of Quit Rents, and Inspector of Roads & Bridges.*  
 G. W. Evans, Esq.

#### *Superintendents, &c.*

Principal Superintendent of Convicts at the Derwent—Mr. John Lakeland.  
 Superintendent of ditto at Launceston—Mr. J. Sinclair.  
 Superintendent of ditto at George Town—Mr. James Anderson.  
 Superintendent of the Prisoners' Barracks at Hobart Town—Mr. G. Beaumont.  
 Superintendent of Carpenters and Builders at Hobart Town—Mr. Thomas Watson.  
 Superintendent of Stone Masons—Mr. William Wilson.  
 Superintendent of Boat-builders at Port Dalrymple—Superintendent of Government Flour Mill at Hobart Town—Mr. John Walker.  
 Superintendent of Government Stock, Mr. A. Bruce.  
 Superintendent of Government Slaughter House—Mr. James Belbin.  
 Inspector of Stock, privately slaughtered or brought into Hobart Town—Mr. James Belbin.  
 Ditto at New Norfolk, Mr. John Pearce.

#### *Public Schools throughout the Dependency.*

General Superintendent for Buckinghamshire—Rev. W. Bedford.

Ditto for Cornwall—Peter Archer Mulgrave, Esq.

#### *Schoolmasters.*

- 1 At Hobart Town.....Mr. W. N. Todd.
  - 2 At Clarence Plains.....Mr. Simmons.
  - 3 At Pitt Water.....Mr. Chapman.
  - 4 At New Norfolk.....Mr. Macqueen.
  - 5 At the Black Brush.....Mr. H. Harborne.
  - 6 At the River Plenty.....Mr. Hance.
  - 7 At the Old Beach.....Mr. T. L. Richardson
  - 8 District of Glenarchy .....C. Tonge.
  - 9 At Launceston .....Mr. J. M'Mahon.
  - 10 George Town.....Mr.
- One Sunday School at Hobart Town, conducted by the Rev. RALPH MANSFIELD, Wesleyan Methodist Missionary.



*Police Establishment.*

Superintendent of Police for the County of Buckinghamshire—A. W. H. Humphrey, Esq. J. P.  
 Chief Clerk in the Police Office at Hobart Town—Mr. Ambrose Boyd.  
 Superintendent of Police for the County of Cornwall—Peter Archer Mulgrave, Esq. J. P.  
 Clerk in the Police Office at Launceston—Mr. Robert Wales.  
 Keeper of His Majesty's Gaol at Hobart Town—Mr. John Bisdee.  
 Keeper of the Prison at Launceston—Mr. A. M. Kinnon.  
 Chief Constable at Hobart Town—Mr. Richard Pitt.  
 Chief District Constables at Port Dalrymple—Mr. Lawson and Mr. J. Wilson.  
*Twenty-nine* Constables in Ordinary at Hobart Town.  
*Thirty* .... District Constables.  
*Fifteen* .... Chief District Constables.  
*Three* ..... Subordinate Clerks in the Police Office at Hobart Town.  
*Two* ..... Night Patrol Constables.

*Coroners.*

For the County of Buckinghamshire—A. W. H. Humphrey, Esq.  
 Ditto—George W. Brooks, Esq.  
 For the County of Cornwall—P. A. Mulgrave, Esq.

*Bank of Van Diemen's Land.*

(Instituted in 1823.)

President—Edward Foord Bromley, Esquire.

*Directors.*

Walter A. Bethune, Esq.	Frederick Champion, Esq.
E. F. Bromley, Esq.	Archibald Macleod, Esq.
George Carr Clark, Esq.	and
A. F. Kemp, Esq.	David Lord, Esq.

Secretary and Cashier—Mr. Richard Lewis.  
 Solicitors to the Bank—George Cartwright and Hugh Ross, Esquires.  
 Principal Accountant—Mr. John Gardiner.  
 Messenger and Collector—Mr.

*Printing Office.*

GOVERNMENT PRINTER—MR. ANDREW BENT.  
 Two Compositors and Pressmen.  
 One Supernumerary, and one Book-binder.

*Attornies, Solicitors, and Proctors, at Hobart Town.*

Messrs. George Cartwright	Messrs. Frederic Dawes
Hugh Ross	Wm. Williamson.

*Van Diemen's Land Auxiliary Branch Bible Society.*

(Instituted in 1819.)

Patron—His Excellency Sir THOS. BRISBANE, K.C.B.

President—His Honor Lieutenant Governor SORELL.

Vice- Presidents	{	Edward Abbott, Esq. Deputy Judge Advocate.
		Thomas Bell, Esq. J. P. Major, C. B.
		Rev. R. Knopwood, M. A.
		Rev. W. Bedford.

Secretary—Rev. W. Bedford, and 3 other Gentlemen.

Treasurer—Mr. H. J. Emmett.

Acting Secretary at Launceston—Rev. Mr. Youl.

Ditto Treasurer at ditto—Mr. R. Dry.

*General Committee for 1824.*

Archer, T. Esq. J. P.	Lascelles, T. A. Esq. New Norfolk
Bromley, E. F. Esq. R.N. Naval Officer.	Moodie, A. Esq. Assistant Commissary General
Beamont, J. Esq. Provost Marshal	Mulgrave, P. A. Esq. J.P.
Evans, G. W. Esq. Deputy Surveyor General	Margetts, J. Esq.
Emmett, Mr. H. J.	Mather, Mr. R.
Gunning, G. W. Esq. J.P.	Maum, Mr. Wm. Clarence Plains
Humphrey, A. W. H. Esq. J. P.	Robinson, Captain H. E. Secretary to the Lieutenant Governor
Hull, G. Esq. Deputy Assistant Commy. General	Read, G. F. Esq. J. P.
Kemp, A. F. Esq.	Rowcroft, C. Esq. J. P. Clyde
Kneale, Captain	Thrupp, Mr. H. Old Beach
Kimberly, Mr. E. Clarence Plains	Welsh, Captain
Lord, E. Esq. J. P.	Walkinshaw, Mr. W.
Lord, D. Esq.	Wade, Mr. J. Pitt Water.

*Agricultural Society.*  
(Instituted in 1821.)

Patron—His Honor Lieutenant Governor SORELL.  
President—Edward Foord Bromley, Esq. R. N. Naval Officer.  
Vice-Presidents—A. W. H. Humphrey, Esq. J. P. and James Gordon, Esq. J. P.  
Treasurer—Edward Abbott, jun. Esq.  
Secretary—Mr. Henry James Emmett.

*General Committee.*

Bethune, W. A. Esq.	Lewis, Mr. Richard
Cartwright, G. Esq.	Read, G. F. Esq.
Evans, G. W. Esq.	Rowcroft, C. Esq.
Gunning, G. W. Esq.	Scott, J. Esq.
Jeffreys, C. Esq.	Whitfield, Mr. J.
Lascelles, T. A. Esq.	

**THE AUSTRALIAN COMPANY.**

(Instituted October 31, 1822.)

Robert Brown, Esq. Manager at Leith.  
Alexander Warren, Esq. Agent at Sydney.  
John Wyld, Esq. Agent at Hobart Town.

*Company's Ships in April, 1823.*

Greenock	442 Tons Register	Josh. Richmond, Commander
Triton...	404 Ditto	James Crear, ditto.

[The object of this Company is the carrying of Goods and Passengers between Leith and Australia. The Capital Stock of the Company is declared to be One Million Pounds Sterling, divided into Shares of One Hundred Pounds each, payable by Instalments, as required by the Committee of Management. The Affairs of the Company are under the Management of fifteen Directors. An Annual Meeting of the Company is held on the 30th of November; when the three Directors, at the top of the list, retire in succession, and other three Members of the Company are chosen in their place.]

*Post Offices.*

Mr. John Thomas Collicott, Postmaster, Hobart Town.  
Mr. Charles Abbott, Postmaster, Launceston.  
Mr. George William Brown, Postmaster, George Town.

*Places to which Letters are forwarded, and from whence they are sent, by and to the Hobart Town Post Office:—*

Sorell Town.....	Mr. Alexander Laing,	} District Constables.
New Norfolk .....	Mr. John Pearce,	
Macquarie District.....	Mr. J. H. Cawthorne,	
River Clyde .....	Mr. Axford,	
Coal River.....	Mr. Murphy.	

*Distilleries and Breweries.*

Inspector and Surveyor (Acting) for the County of Buckinghamshire—Mr. Henry James Emmett.

1. Sorell Distillery, at Cascade, Mrs. E. A. Midwood, Proprietor.
2. Derwent Distillery, Macquarie-street, Messrs. Loane & Co. ditto.
3. Hobart Town Brewery, Davey-street, Messrs. Petchey & Wood, ditto.
4. New Town Brewery, New Town, Mr. George Gatehouse, ditto.
5. Tasman's Brewery, Liverpool-street, Mrs. Whyte, do.
6. Derwent Brewery, Collins-street, Mr. J. Ogilvie, ditto.
7. Presnell's Brewery, Argyle-street, Mr. T. Presnell, ditto.
8. Gorrings Brewery, Cross Marsh, Mr. T. F. Gorrings, ditto.

*Public Offices in Hobart Town.*

Offices.	Attendance.	Where situated.
Lieutenant Governor's Office	11 to 3	Government House.
Secretary's Office .....	10 to 3	Near ditto.
Acting Engineer's Office....	10 to 3	Lumber Yard.
Judge Advocate's Office ....	10 to 2	Liverpool-street.
Provost Marshal's Office....	10 to 2	Ditto.
Commissariat Office.....	10 to 3	Macquarie-street.
Naval Office .....	10 to 3	Davey-street.
Colonial Fund Office.....	10 to 3	Ditto.
Police Office .....	always	Harrington-street.
Deputy Surveyor's Office....	10 to 2	Murray-street.
Post Office.....	9 to 6	Ditto.
Gazette Office .....	10 to 2	} Elizabeth-street.
	4 to 8	



*Licensed Auctioneers and Appraisers.*

Mr. John Thomas Collicott, Hobart Town.	Messrs. F. & V. Champion, jointly, Hobart Town.
Mr. R. W. Fryett, ditto.	Mr. R. White, Launceston.
Mr. J. C. Underwood, ditto.	Mr. J. H. Reibey, ditto.

*Marine Establishment.*

<i>Vessels' Names.</i>	<i>How rigged</i>	<i>Com. Names.</i>	<i>How employed.</i>
Duke of York...	Brig	Mr. J. Honner	To Macquarie Harbour
Prince Leopold	Brig	Mr. Harris	To North-west Bay
Waterloo.....	Sch.	Mr. Kinghorne	To Macquarie Harbour

*Harbour Masters, Pilots, &c.*

Mr. James Kelly, Harbour Master	} Pilots.	} River Derwent.
Mr. Michael Mansfield,		
Mr. James Kelly,		
Water Bailiff—Samuel Nash.		
Mr. John Thomas, Harbour Master and Pilot,	} Port Dalrymple	
Mr. J. Brown, Assistant Pilot,		
Mr. Lucas, Harbour Master & Pilot, Macquarie Harbour		
J. Daniels, Keeper of the Punt and Ferry, at Launceston		

**MILITARY ESTABLISHMENT**

IN THE

**DEPENDENCY OF VAN DIEMEN'S LAND.***Four Companies of Infantry:*

At Hobart Town, Macquarie Har- bour, & interior Stations .....	} Two Companies of His Majesty's 48th Regi- ment.
At George Town, Launceston, and interior Stations	
	} Two Companies of His Majesty's 3d Regi- ment (Bufs).

**FEES AND DUTIES**

RECEIVED IN THE

**VARIOUS PUBLIC OFFICES.**

—000—

**SECRETARY'S OFFICE.**

On all Special Licenses for Marriages .....	£4	4	0
For fixing the Official Seal to the Clearance of Vessels for Foreign Voyages, or Fishing, per Ton .....	0	0	6
For every Person leaving the Colony, whereof 1s. goes to the Principal Clerk .....	0	2	6
Transcripts of all Papers, per folio of 72 Words 1s. and transcribing Clerk, per ditto 3d ....	0	1	3

*Fees to the Principal Clerk.*

Free and Conditional Pardons, each .....	0	5	8
On Certificates of Freedom, ditto .....	0	2	8
Tickets of Leave, ditto .....	0	2	8
N. B.—Six-pence on the Free and Conditional Pardons, and two-pence on Certificates and Tickets of Leave, is to be paid to the Go- vernment Printer, as a Remuneration for Paper and Printing; and Six-pence to the Gaoler on each Certificate, for reference to the Black Book.			

**LIEUTENANT GOVERNOR'S COURT.***Deputy Judge Advocate's Office.*

For every Summons to attend the Deputy Judge Advocate, at his Office or Chambers .....	0	2	6
For every Writ, where the Sum sued for does not exceed £1 .....	0	0	6
For every Writ, where the Sum sued is above £1, and not exceeding £2 .....	0	1	0

For every Writ, when it does not exceed £5 ..	0	1	6
For every Writ, when more than £5, but not exceeding £10 .....	0	2	0
Every Subpœna, and every Search, granting and entering every Rule .....	0	2	0
Every Witness sworn (except in Causes not exceeding £5) .....	0	1	0
Entering the Appearance of every Defendant, or his Default (except in Suits under £5) ..	0	0	6
Above £5 .....	0	1	0
Taking and justifying Bail (each) .....	0	2	0
For each and every Writ, where the Sum sued for is £10, under £30 .....	0	6	0
For each and every Writ, where the Sum sued for is £30 and upwards .....	0	10	0

*Fees.*

For entering each Cause for Trial above £5, and under £10 - - - - -	0	3	4
Above £10 - - - - -	0	6	8
For hearing such Cause, and recording the Verdict above £5, and under £10 - - - - -	0	3	4
Above £10 - - - - -	0	6	8
For each and every Writ of Execution, where the Sum is £10, and under £30 - - - - -	0	8	6
Above £30 - - - - -	0	10	0
For each and every Affidavit sworn before the Deputy Judge Advocate - - - - -	0	2	6
For filing the same - - - - -	0	2	6
For each and every attested Office Copy of Proceedings, for every folio containing 72 Words	0	1	4
For calling and swearing every Witness - - - - -	0	1	6
For every Paper (writing) exhibited in Evidence	0	2	6
For lodging every Petition or Plaint - - - - -	0	5	0
For paying Money into Court, 3d. per every Pound exceeding £10; for any Sum under that Amount - - - - -	0	2	6
N. B.—Complaints or Petitions under £5, no Charge.—Subpœnas and Searches under £5, no Charge.			

*Cryer's Fees.*

For every Cause cried, or Oath administered by him, under £5 - - - - -	0	0	3
For every Cause or Oath administered above £5 - - - - -	0	0	6
For every Cause cried above £10 - - - - -	0	1	0
For every Oath administered as above - - - - -	0	0	6

*Provost Marshal's Office.*

For executing every Summons, when it does not exceed 40s. - - - - -	0	2	0
For executing every Summons, where the Sum sued for does not exceed £5 - - - - -	0	5	0
For executing every Writ above £5, and not exceeding £10 - - - - -	0	10	0
For every Writ of £10, and not exceeding £30 - - - - -	0	14	0
For every Writ above £30 - - - - -	0	18	0
For all Rules of Court in the same Proportion.			
For every Bail Bond from Defendant - - - - -	0	10	0
For every Execution in the same Proportion } as upon Writs.			
For Poundage, at the Rate of £5 per Cent. from £50 downwards, and on the Sum actually levied, and on the actual Debt, upon taking the Defendant in Execution; also to a Poundage of £5 per Cent. on the yearly Value, on executing every <i>habere facias</i> .			
For every Bill of Sale - - - - -	1	0	0
For a Man to take Charge of Goods, seized by Execution, if victualled by the Persons levied upon, per Day - - - - -	0	2	6
If not victualled - - - - -	0	5	0
For every Search and every Certificate made at his Office - - - - -	0	2	6
For every Copy of Notices from his Office, per folio of 72 Words - - - - -	0	2	6
For Copies of all other Papers taken from his Office, per folio of 72 Words - - - - -	0	1	3
For drawing every Replevin Bond - - - - -	0	7	6



## (To the Deputy Provost Marshal.)

For the Service of every bailable Writ - - 0 2 6

## NAVAL OFFICE.

Entry for a Ship with Articles for Sale, and in  
Government Service - - - 0 15 0  
Ditto, ditto, and not in Government Service - 1 10 0  
Ditto, with no Articles, ditto ditto - - - 0 15 0  
Ditto for all Foreign Vessels - - - 3 0 0  
Permission to Trade - - - 1 0 0  
Dues of each Bond - - - 0 10 6  
Ditto of Port Clearance - - - 0 5 0  
Ditto, ditto the Naval Officer's Clerk - - - 0 2 6  
Ditto to Naval Officer's Clerk, for each Per-  
mit to land Spirits or Wine, per Cask - 0 0 6

## For Colonial Vessels.

Deeds of Entry and Clearance to the Out-ports 0 4 0  
Ditto to the Fishery, or the Out-settlements - 0 10 0  
Ditto to Naval Officer's Clerk - - - 0 2 0  
Ships from any Part of the World importing  
Cargoes (the Manufactures of Great Bri-  
tain excepted), to pay a Duty of 15 per  
Cent. *ad valorem* on the Amount of their  
respective Invoices.  
On every Gallon of Brandy, landed - - - 0 15 0  
On every Gallon of Hollands, ditto - - - 0 15 0  
On every Gallon of Gin, ditto - - - 0 15 0  
On every Gallon of Rum, the Produce of the  
West India Colonies - - - 0 10 0  
On every Gallon of Spirits, distilled in Van  
Diemen's Land - - - 0 2 6  
On every Gallon of Wine, landed - - - 0 0 9  
On each Pound of Tobacco, ditto - - - 0 4 0  
Wharfrage on each Bale, Cask, or Package,  
ditto - - - 0 0 6  
On Huon-pine or other Timber from Mac-  
quarie Harbour, or any other Part of the  
Coast or Harbours of Van Diemen's Land,

when not supplied by Government La-  
bourers, for each solid Foot - - - 0 1 0  
For every 20 Spars from New Zealand, or else-  
where - - - 1 0 0  
On Timber, in log or plank, from New Zealand  
or elsewhere, for each solid foot - - - 0 1 0  
The Naval Officer to receive 5 per Cent. on  
all Duties collected at the Port of the  
River Derwent.

## Wharfinger's Fees.

On each Bale, Cask, or Package, landed or  
shipped - - - 0 0 3  
Metage per ton on Coals - - - 0 2 6  
Measure of Timber, per 1000 Feet - - - 0 2 0

## GAOLER'S FEES.

From every Debtor, on his Discharge from each  
Action - - - 0 1 0  
For every Sailor confined for being disorderly,  
For the first Night thereof - - - 0 2 6  
For every following Night - - - 0 1 0  
From every free Person, and Person holding  
a Ticket of Leave, taken up and confined for  
being disorderly, on the Discharge of the  
same, each - - - 0 3 0  
From every Person receiving a Certificate  
of his or her Term of Transportation being  
expired (reference being always had to the  
Black Book in his Possession - - - 0 0 6

## Fees to be received by the Chief Constable.

On the apprehending and lodging in Gaol any  
Sailor, who may be found riotous or disor-  
derly, of which Fee 1s. is to be paid to the  
Constable or Constables assisting in the ap-  
prehension - - - 0 2 6  
For each Night that Sailors so apprehended  
may be confined; which is to be distributed  
as the foregoing - - - 0 2 6

For the apprehending of Deserters or Runaway Sailors, to be divided equally among the apprehending Constables and himself	- 2	0	0
For serving Summonses from the Deputy Judge Advocate's Office, for Debts under 40s. each Summons	- 0	1	0
For the seizure of Stills, or other Articles prohibited by the Colonial Regulations, and ordered for Distribution among the seizing Constables, the Chief Constable is to receive an equal Proportion with them.			

*Surplice Fees.*

Marriages by License, Clergyman	3	3	0
Clerk	0	10	0
Sexton	0	5	0
Ditto by banns, free Persons			
Clergyman	0	10	6
Clerk { banns	0	2	0
{ marriage	0	3	0
Sexton	0	1	6
Christenings, for registering	0	1	0
Churching, free Persons only			
Clergyman	0	1	0
Clerk	0	0	6
Sexton	0	0	6
Funerals, free Persons—Clergyman	0	5	0
Clerk	0	2	6
Bell	0	0	6
Grave Digger	0	2	6

## POST OFFICE CHARGES.

Single Letter to or from England, and Foreign Places	- 0	0	8
Double ditto	- 0	1	4
Triple	- 0	2	0
All above triple, Packets, &c.	- 0	2	6
Single Letter to or from New South Wales	- 0	0	4
Double ditto, ditto	- 0	0	8

Triple ditto, ditto	- 0	1	0
All above, Packets, &c.	- 0	1	6
Soldiers' Letters, and those addressed to their Wives	- 0	0	1
Letters or Packets between Hobart Town and Launceston, not exceeding one ounce	- 0	1	0
Ditto, above one ounce, and not exceeding three ounces	- 0	2	0
From either of the above Towns to the Half-way House (Presnell's, White Hart, Sorell Springs) or to any intermediate Place on the Road, from either Town, respectively, Half the above Rates.			
Letters to the Clyde will bear the same Postage as fixed for Letters not exceeding half-way to Launceston, as above stated.			
Between Hobart Town and George Town, not exceeding one ounce	- 0	1	6
Ditto, above one ounce, and not exceeding three ounces	- 0	2	6
Between Launceston and George Town, not exceeding one ounce	- 0	0	6
Ditto, above one ounce, and not exceeding three ounces	- 0	1	0

Letters to the Coal River, Sorell Township, Pitt Water, New Norfolk, and Macquarie Plains, and for all intermediate Places, are subject to Postage as follows: not exceeding one ounce 3d.; above one ounce, and not exceeding three ounces 6d.; and exceeding three ounces to be paid for accordingly.

No large Parcels are received for conveyance; and all Packets exceeding three ounces are to be paid for accordingly.—The Postage on all Letters and packets is paid at the Office where they are received for transmission, and they are stamped (after the same plan as in England) with the mark of the Town from which they go.

The Government Messengers are not allowed upon any



account to receive or convey from either Station, any Letters or Packets not regularly stamped and noted in their Post Bill; and all Persons procuring a Messenger to act contrary thereto, have no Claim to redress for Loss or Neglect, in case of Letters or Packets not so entered.

The Messengers being strictly forbidden from going off the High Road, all Letters or Packets, for Persons not residing thereon, should be directed to be left at the nearest Inn or House, at which the Messenger halts, or which he passes on his way.

*The Messengers are dispatched from the respective Towns as follows:—*

From Hobart Town and Launceston every Monday at 12 o'Clock—to arrive, respectively, by 4 o'Clock on Fridays.

From Launceston to George Town on the arrival of the Messenger from Hobart Town—to arrive at George Town on Saturday afternoon.

From George Town on Sunday at Day-light—to arrive in time for the Messenger to Hobart Town.

☞ All Letters are required to be left at the Post Office of each Town before 10 o'Clock, A. M. on Mondays.

#### *Privileges and Licenses.*

(Not stated in any of the foregoing Fees.)

A License to distil Spirits, annually .....	25	0	0
Ditto to brew Beer, ditto .....	25	0	0
Ditto for retailing Spirits, ditto .....	30	0	0
Ditto for retailing Beer, ditto .....	5	0	0
Ditto for Pedlers and Hawkers, ditto .....	20	0	0
Ditto for Ferry or Passage Boats, ditto ....	0	10	6
Ditto for all Private Boats, ditto .....	0	2	6
Ditto for Bakers, ditto .....	0	5	0
Ditto for Butchers, ditto .....	0	5	0
Ditto for a Cart .....	0	5	0
Permit, to remove Spirits or Wine .....	0	0	6

### TOLLS,

TO BE TAKEN AT THE SEVERAL FERRIES THROUGH-  
OUT THE COLONY.

#### COUNTY OF BUCKINGHAMSHIRE.

##### PUNT FERRIES,

*For Conveyance of Cattle, Carriages, and Passengers,  
across the River Derwent.*

*Between Rosneath and Compton (Port Dalrymple Road.)*

For each Person - - - - -	-	0	0	6
Horse, or Head of Horned Cattle - - - - -	-	0	1	6
Colt, or Head of Cattle, under a year old - - - - -	-	0	1	0
Pig, Dog, or Goat - - - - -	-	0	0	2
Bushel of Grain - - - - -	-	0	0	2
Cart - - - - -	-	0	2	6
Chaise - - - - -	-	0	3	0
Luggage, per cwt. - - - - -	-	0	0	2
Sheep, per score - - - - -	-	0	1	8

*Between Elizabeth Town, New Norfolk, and other Side.*

For each Person - - - - -	-	0	0	6
Horse, or Head of Horned Cattle - - - - -	-	0	1	6
Colt, or Head of Cattle, under a year old - - - - -	-	0	1	0
Pig, Dog, or Goat - - - - -	-	0	0	2
Bushel of Grain - - - - -	-	0	0	2
Cart - - - - -	-	0	2	6
Chaise - - - - -	-	0	3	0
Luggage, per cwt. - - - - -	-	0	0	2
Sheep, per score - - - - -	-	0	1	8

##### OTHER FERRIES.

*Between the Black Snake and Cove Point, and Green Point.*

For each Person - - - - -	-	0	0	6
Horse, or Head of Horned Cattle - - - - -	-	0	1	6
Colt, or Head of Cattle, under a year old - - - - -	-	0	1	0
Pig, Dog, or Goat - - - - -	-	0	0	2
Bushel of Grain - - - - -	-	0	0	2
Cart - - - - -	-	0	2	6
Chaise - - - - -	-	0	3	0
Luggage, per cwt. - - - - -	-	0	0	2
Sheep, per score - - - - -	-	0	1	8

*Between Hobart Town and Kangaroo Point, and Hobart Town and Ralph's Bay.*

For each grown Person	-	-	-	-	0	0	9
For each Child	-	-	-	-	0	0	4
Bundle or Package, not exceeding 5lbs. weight	-	-	-	-	0	0	1
Ditto, above 5 lbs. and not exceeding 20 lbs. do.	-	-	-	-	0	0	3
Horse or Head of Horned Cattle	-	-	-	-	0	5	0
Sheep or middle sized Pig	-	-	-	-	0	0	4
Gallon of Spirits	-	-	-	-	0	0	1
Bushel of Grain	-	-	-	-	0	0	3
Large Boat Load of Grain, Wool, or Straw	-	-	-	-	0	7	6
Cart or Chaise	-	-	-	-	0	7	6

*Between the Bluff Point and Pitt Water, Sorell Township.*

Grown Person	-	-	0	2	6	To Middle Point.	0	1	3
Child	-	-	0	1	3		0	0	7
Horse or Head of Cattle	-	-	0	10	0		0	7	6
Sheep, Pig, Goat, or Dog	-	-	0	0	3		0	0	3
Bushel of Grain	-	-	-	0	0		0	0	3
Gallon of Spirits, Wine, or Oil, in casks	-	-	-	0	0		0	0	1
Hogshead of ditto	-	-	-	0	5	0	0	5	0
Poultry, per dozen	-	-	-	0	1	0	0	1	0
Meat, per cwt.	-	-	-	0	0	6	0	0	6
Potatoes, ditto	-	-	-	0	0	3	0	0	3

*Lower Ferry, Pitt Water.*

For each grown Person	-	-	-	-	0	1	6
Child	-	-	-	-	-	0	0
Horse or Head of Horned Cattle (if one only of the latter)	-	-	-	-	-	0	5
Head of Horned Cattle (if more than one)	-	-	-	-	-	0	3
Cart	-	-	-	-	-	0	5
Sheep, Pig, Dog, or Goat	-	-	-	-	-	0	0
Gallon of Spirits, Wine, or Oil, in casks	-	-	-	-	-	0	0
Hogshead of ditto	-	-	-	-	-	0	0
Poultry, per dozen	-	-	-	-	-	0	0
Potatoes, per cwt.	-	-	-	-	-	0	0
Bushel of Grain	-	-	-	-	-	0	0
Bundle	-	-	-	-	-	0	0
Luggage, per cwt.	-	-	-	-	-	0	0

*Prices fixed by Regulation for Conveyance of Goods and Passengers on the Derwent.*

*To and from New Norfolk.*

For each grown Person	-	-	-	0	3	0
Each Child, under 12 years of age	-	-	-	0	1	6
Every Sheep, Dog, or Goat	-	-	-	0	1	0
Each Pig, under 100 lbs. weight	-	-	-	0	1	0
Ditto, above ditto	-	-	-	0	1	6
Wine or Spirits, per gallon	-	-	-	0	0	2
Ditto, per hogshead	-	-	-	0	10	0
Poultry, per dozen	-	-	-	0	1	0
Meat, per cwt.	-	-	-	0	0	6
Potatoes, per cwt.	-	-	-	0	0	8
Grain, per bushel	-	-	-	0	0	6
For every Bundle or Package, not exceeding 5 lbs. weight	-	-	-	0	0	3
Luggage, per cwt.	-	-	-	0	1	0
Light Luggage, per square foot	-	-	-	0	0	3

*To and from Herdsman's Cove, Cove Point, & Green Point.*

For each grown Person	-	-	-	0	2	0
Each Child, under 12 years of age	-	-	-	0	1	0
Every Sheep, Dog, or Goat	-	-	-	0	0	6
Each Pig, under 100 lbs. weight	-	-	-	0	0	9
Ditto, above ditto	-	-	-	0	1	0
Wine or Spirits, per gallon	-	-	-	0	0	1½
Ditto, per hogshead	-	-	-	0	7	6
Poultry, per dozen	-	-	-	0	0	9
Meat, per cwt.	-	-	-	0	0	5
Potatoes, per cwt.	-	-	-	0	0	6
Grain, per bushel	-	-	-	0	0	4
For every Bundle or Package, not exceeding 5 lbs. weight	-	-	-	0	0	2
Luggage, per cwt.	-	-	-	0	0	9
Light Luggage, per square foot	-	-	-	0	0	2

**COUNTY OF CORNWALL.**

<i>Punt Ferry, South Esk.</i>	} Govt. Ferries.
<i>Punt Ferry, North Esk, at Launceston.</i>	



*Names of the Persons who are licensed to ply Boats, for the Conveyance of Passengers and Goods from Hobart Town to the following Places, on the River Derwent:—*

**TO NEW NORFOLK.**

James Howe—To leave Hobart Town on Mondays and Thursdays.

William Maycock—Tuesdays and Fridays.

William Wheeler—To leave New Norfolk on Tuesdays and Fridays.

**TO NEW NORFOLK AND COMPTON.**

Charles Gilliver—To leave Hobart Town Tuesdays and Fridays.

**TO NEW NORFOLK AND GREEN POINT.**

John Edward Blinkworth and Thomas Lucas—To leave Hobart Town on Tuesdays and Fridays.

**TO HERDSMAN'S COVE.**

John Patterson—To leave the Cove on Tuesdays and Fridays.

**LIEUTENANT GOVERNOR'S COURT.**

[For 1824.]

<i>Terms</i>	First	} <i>Begins</i>	Jan. 2	<i>Ends</i>	Jan. 30
	Second		April 2		April 30
	Third		July 2		July 30
	Fourth		Oct. 1		Oct. 29

*Publications printed in the Colonies.*

NAMES.	When published.	By whom printed.
Hobart Town Gazette ..	Saturdays	Mr. Andrew Bent.
Van Diemen's Land } Almanack .....	1st January	Ditto
Sydney Gazette .....	Thursday	Mr. Robert Howe.
Australian Almanack ..	1st January	Ditto.

**THE NAMES AND BOUNDARIES  
OF THE  
SEVERAL DISTRICTS**

WITHIN THE

*Counties of Buckinghamshire and Cornwall.*

**COUNTY OF BUCKINGHAMSHIRE.**

*Districts.*

**KINGBOROUGH.**—Bounded on the N. by the south side of Brown's River, and a west line of 4½ miles; W. by a south line of 8 miles; S. by an east line to D'Entrecasteaux's Channel (Storm Bay Passage); and E. by D'Entrecasteaux's Channel, North-west Bay, and the River Derwent round to the mouth of Brown's River.

**QUEENBOROUGH.**—Bounded on the S. by Kingborough district; E. by the Derwent River, which includes all those grants commonly called the Sandy Bay Farms, and those on the north side of Brown's River; N. by Argyle district, which commences at the Sandy Bay Creek, and continues west towards Mount Wellington; and on the W. by the hills.

**ARGYLE.**—Bounded on the S. by Sandy Bay Creek, and continues W. to Mount Wellington; S. W. by Mount Wellington and the attached range; N. E. by the Derwent River, including Hobart Town, and all those farms situated and round about New Town to the rivulet at O'Brien's; N. W. by the rivulet to its source; and the S. W. by Mount Wellington ranges.

**GLENARCHY.**—Bounded on the S. E. by Argyle district; on the N. E. N. and N. W. sides by the Derwent River, round by the stream commonly known by the name of the First River, (now named by His Excellency the Governor in Chief, Sorell River) which includes all those farms at what is known by the Black Snake; S. W. by that river to its source; and on the S. by that part of Mount Wellington range.

**YORK.**—Bounded on the W. by the Derwent River and part of Ralph's Bay; S. and E. by North Bay round to Ralph's Bay Neck; and on the N. by the Neck, which includes that part commonly called the South Arm and Muddy Plains.

**CLARENCE PLAINS.**—Bounded on the N. W. by the north west side of Kangaroo Bay, the creek, and the road leading to the Pitt Water bluff; on the N. by the south side of Pitt Water to North Bay; S. and E. by North Bay, Ralph's Bay Neck, and Ralph's Bay to the Derwent; and on the W. and S. by the Derwent River to Kangaroo Bay.

**SUSSEX.**—Bounded on the N. W. and N. by the Iron Creek to its source; on the E. by a range of hills; on the S. by the Carlton River to its source; and on the W. and S. W. by North Bay, and part of Pitt Water to the Iron Creek.

**GLOUCESTER.**—Bounded on the E. and S. E. by the Iron Creek to its source, which is the north and north west boundary of Sussex district; S. by part of Pitt Water to Orielson Creek; S. W. by Orielson Creek, until lost in the range of hills; and N. by the hills.

**HARRINGTON.**—Bounded on the N. by the Pitt Water Road, commencing at the Coal River Bridge; E. by Orielson Creek to Pitt Water; and on the S. and S. W. by part of Pitt Water and the Coal River to the bridge over it, including what is commonly called Sweet Water.

**CALEDON.**—Bounded on the S. by the Pitt Water road, commencing at the Coal River Bridge to Orielson Creek; on the S. E. by Orielson Creek to its source, and a north line of 4 miles; on the N. by a west line to the junction of the Kangaroo River with the Coal River; and on the W. by the Coal River.

**STAFFA.**—Bounded on the South by Caledon district, commencing at the junction of the Kangaroo stream with the Coal River; E. by the range of hills connecting with what is called the Brown Mountain; N. by the large Lagoon at Jericho; and W. by the Coal River.

**ORMAIG.**—Bounded on the S. by the Ulva district, commencing at the junction of the Kangaroo stream with the Coal River, and running west 6 miles to a range of hills; W. by the range; N. by an east line to the Coal River; and E. by the Coal River.

**ULVA.**—Bounded on the N. by Ormaig district to a range of hills; W. by a north line of 7 miles, including what is commonly called the Tea-tree Brush; S. by an east line to the Coal River; and E. by the Coal River.

**CAMBRIDGE.**—Bounded on the N. by Ulva district; W. by part of Drummond district; S. W. by Forbes and Clarence Plain districts, to the road leading to Pitt Water Bluff; S. E. by the road; and N. E. by that part of Pitt Water near the Coal River entrance.

**FORBES.**—Bounded on the N. E. by Cambridge district; S. E. by a south west line from the Cambridge district to Geils' Town Bay; S. W. by the Derwent River to an inlet and creek in Herdsman's Cove; and N. by the creek.—This includes Mount Direction and the hill commonly called the Devil's Back.

**DRUMMOND.**—Bounded on the S. by Forbes district; E. by a range of hills leading to that part called the Tea-tree Brush; N. by a creek generally known by the Mint Swamp, (lately named by His Excellency Governor Macquarie, Strathallan Creek) to the Jordan River; and W. by the Jordan and Herdsman's Cove.—This description includes the township of Brighton.

**JARVIS.**—Bounded on the S. by Strathallan Creek (the north boundary of Drummond district); E. by the Bagdad range of hills; N. by a west line to Constitution Hill; and on the west side by a creek called the Bagdad Run to the Mint Swamp, or its junction with Strathallan Creek.

**STRANGFORD.**—Bounded on the N. E. by the Bagdad Run to the Mint Swamp (now named Strathallan Creek); S. by the Jordan River, until an east line will fall upon Constitution Hill; and N. by that east line.



**MELVILLE.**—Bounded on the N. by the River Jordan; E. by the same river and Herdsman's Cove to the Derwent River; S. as far up the Derwent as the First River (now named Sorell River); and W. by a north line to the Jordan, including what is commonly called Green Point.

**NEW NORFOLK.**—Bounded on the E. by the Melville district on the north side of the Derwent; and by Glenarchy district on the south side of the same river; N. by the Jordan River; W. by a north line commencing from the gully, where the new road is made over to Macquarie district, which is on the north side of the Derwent, and by the stream called the "Plenty" to its source, which is on the south side of the Derwent; and S. by a continuation of Mount Wellington range.—This description includes Elizabeth Town.

**MACQUARIE.**—Bounded on the E. by New Norfolk district, on both sides the Derwent; N. by a range of mountainous hills, connecting with Emu Valley; W. by the Clyde (commonly called the Fat Doe River) to the Derwent River, and a south line from the south side of it to a range of high mountains; and S. by the mountains.—This district includes the new township of Macquarie.

**GREEN PONDS.**—Bounded on the S. by Strangford and Melville districts; W. by a range of hills, dividing the Jordan River from the Clyde; N. by an east and west line running from Spring Hill; and E. by the hills laying between Port Dalrymple Road and the Coal River.

**PITT.**—Is generally known as Bruné Island.

**SORELL.**—Bounded on the E. by the River Clyde; S. by the Derwent to the Shannon; and N. by what is called the Blue Hill; also on the W. by the Shannon.

**MURRAY.**—Bounded on the S. by a range of high hills, west of Emu Valley; N. by the hills connecting with the Western Table Mountain; E. by the hills laying between the Rivers Clyde and Jordan; and W. by the Clyde River.

**AMHERST.**—Bounded on the E. by the Clyde River; S.

by the Blue Hill to the Shannon; W. by the Shannon stream; and N. by the hills connecting with the Western Table Mountain, bearing east and west.

**BATH.**—Bounded on the S. by the north termination of the Green Ponds district, which is Spring Hill, comprising all that tract to the lagoon at Jericho; E. so far as the dividing range from the coast; and W. to the Western Table Mountain.—This description includes the township of Oatlands.

**METHVEN.**—Bounded on the S. by the north termination of the Bath district, which is Macquarie Springs, extending over all that country northward to Antill's Ponds; E. so far as the dividing range from the coast; and W. to the connecting hills with the Western Table Mountain.

**LENNOX.**—Bounded on the S. by the north termination of Methven district, and northward to Macquarie River, which is the north extreme, extending eastward to the source of that river, and the dividing range from the coast; and W. by the Western Hills.

## COUNTY OF CORNWALL.

### *Districts.*

**RICHMOND.**—Bounded on the S. by the Macquarie River, and N. by Elizabeth River from their junction to their sources; and E. by the dividing range from the coast.

**BATHURST.**—Bounded on the S. by Elizabeth River, and Macquarie River to its junction with the Lake River; W. by the Lake River to its connection with the South Esk River; N. by the South Esk River, until a south line cuts the ridge of hills dividing it from Elizabeth River; and E. by that ridge of hills.—This description includes Campbell Town, Perth, and Bathurst Plains.

**LAKE RIVER.**—Bounded on the E. by the Lake River to the Western Mountains; on the S. and W. by those mountains; and on the N. by an east line to the Lake River at the upper end of Norfolk Plains.

**NORFOLK PLAINS.**—Bounded on the N. E. by a north west line of 5 miles from opposite the township of Perth, and a west line to the Lake River; on the W. by a south line to the Lake River district; and on the S. and S. E. by the districts of Lake River and Bathurst.—This includes all the settlement called Norfolk Plains.

**BREADALBANE.**—Bounded on the S. W. by Norfolk Plains district; on the N. by a north east line to the North Esk River, and afterwards by the North Esk to the range of Ben Lomond; S. E. by a south west line to the South Esk, opposite Mr. Gibson's house, and afterwards by the South Esk to Perth Town.—This district includes part of Patterson's Plains and Camden's Valley.

**MORVEN.**—Bounded on the N. W. by Breadalbane district; N. by the range of Ben Lomond, and an east line to the South Esk; and on the other sides by the South Esk River.—In this district is the stream called the Nile, and the first and second creeks from Ben Lomond.

**WESTERN RIVER.**—Bounded on the E. by Norfolk Plains; N. E. by a north west line of 7 miles from a bend on the South Esk, where the river bears to the north east; N. W. by the range of hills on the north side of the Western River; W. by a south line to the Western Mountains, beyond the first Western Creek; and on the S. by an east line to Norfolk Plains.—This district includes the Pennyroyal Swamp and Quamby's.

**LAUNCESTON.**—Bounded on the S. by Breadalbane district to the South Esk River; S. W. by the Western River district; N. W. by a north east line to a range of hills from Ben Lomond till it joins the North Esk River, and afterwards by the North Esk, which is the boundary of Breadalbane.—This goes about 10 miles down the Tamar, and includes the town of Launceston, and the lower end of Patterson's Plains.

**GEORGE TOWN.**—This district includes both sides of the Tamar where George Town stands, down to the sea coast, at the entrance of Port Dalrymple, and extends up the Tamar, towards Launceston.

## DISTANCES

### OF THE SEVERAL TOWNSHIPS AND SETTLEMENTS,

IN VAN DIEMEN'S LAND,  
FROM WELLINGTON BRIDGE, HOBART TOWN.

	Miles.
To Mount Nelson.....	2 $\frac{1}{2}$
To Brown's River.....	8
To New Town Bridge.....	23 $\frac{1}{2}$
To Austin's Ferry, Roseneath Inn.....	8 $\frac{3}{4}$
To the Half-way House, Black Snake.....	11 $\frac{1}{2}$
To Green Point (Morris's Ferry).....	11
To Elizabeth Town, New Norfolk.....	21 $\frac{1}{2}$
To the Ferry, at ditto.....	21 $\frac{1}{2}$
To Sorell River.....	18
To Brighton, Bagdad.....	16
To the Tea-tree Brush.....	18
To the Cross Marsh.....	31
To the Mint Swamp.....	16 $\frac{1}{2}$
To the Top of Constitution Hill.....	24 $\frac{1}{2}$
To Frank's Inn, Green Water Ponds.....	27
To the Cross Marsh.....	32
To Birch's Hut, Lovely Banks.....	36 $\frac{1}{2}$
To the Top of Spring Hill.....	40
To the Jordan River, Jericho.....	43
To the River Clyde.....	45
To the Township of Oatlands.....	50
To the Shannon River.....	56
To Ross Bridge, Macquarie River.....	74
To Campbell Town Bridge, Elizabeth River.....	82
To Perth, over the South Esk.....	112
To Launceston.....	123
To George Town.....	163

*Measured Miles from Kangaroo Point to the following Places:—*

To Sorell Town, Pitt Water.....	22
To the Coal River Bridge.....	14
To Orielson Creek.....	20
To Clarence Plains.....	5



To Muddy Plains.....	11
To the Hollow Tree.....	6
To the Pitt Water Bluff.....	8½
To Prosser's Plains.....	25
To the Fording of Prosser's River.....	30
To Little Swan Port.....	45
To the Settlement at Great Swan Port.....	60

*Measured Miles from Wellington Bridge, Hobart Town,  
to Launceston:—*

	<i>Miles.</i>
From Hobart Town to Austin's Ferry.....	8½
From the Ferry to Strathallan Creek.....	7½
From Strathallan Creek to Constitution Hill.....	8
From Constitution Hill to Green Ponds (Ashton's).....	3½
From the Green Ponds to the Cross Marsh.....	4
From the Cross Marsh to the Lovely Banks.....	4½
From the Lovely Banks to the Top of Spring Hill.....	3½
From the Top of Spring Hill to the Gaol at Jericho.....	2
From the Gaol at Jericho to the Jordan River.....	1

---

43

From the Jordan River to Lemon Springs.....	4
From Lemon Springs to Macquarie Springs.....	5½
From Macquarie Springs to York Plains.....	4½
From York Plains to Sorell Springs.....	2½
From Sorell Springs to Antill's Ponds.....	4
From Antill's Ponds to Ross Bridge, Macquarie River.....	10½
From Macquarie River to the Bridge, Elizabeth River.....	8

---

38½

From Elizabeth River to the George & Dragon Inn.....	7
From the Inn through Epping Forest.....	10½
From Epping Forest to Mr. Gibson's.....	10½
From Mr. Gibson's to the Ferry on the South Esk.....	1½
From the Ferry on the South Esk to Launceston..	12½

(123 Miles.)

---

42½

## SUCCESSION

OF THE

### LIEUTENANT GOVERNORS

OF

#### VAN DIEMEN'S LAND.

—ooo—

**I. LIEUTENANT GOVERNOR DAVID COLLINS** arrived from England with the first fleet, and established the Colony at Hobart Town on the 16th of February, 1804, after the arrival in the month of August, in the preceding year (1803), of Captain Bowen, in His Majesty's Colonial Brig Lady Nelson, with a small party of soldiers and prisoners on board from Port Jackson; who were disembarked at Restdown.—He died during the Administration of his Government, in the Island, on the 24th March, 1810; having administered the Affairs of the Colony 6 years and 31 days.

After the death of Colonel COLLINS, till the beginning of 1813, the Government of the Colony was *pro tempore* administered by three Commandants in succession; viz. Lieutenant EDWARD LORD, Royal Marines; Captain MURRAY, 73d Regiment; and Lieutenant-Colonel GIELS, 73d Regiment.

**II.—LIEUTENANT GOVERNOR THOMAS DAVEY** arrived in the Colony on the 17th of February 1813, and continued to administer the Government of the Island till the 9th of April, 1817; having administered the Affairs of the Colony 4 years and 51 days.

**III.—LIEUTENANT GOVERNOR WILLIAM SORELL** succeeded Lieutenant Governor DAVEY, and was sworn in as the King's Lieutenant Governor of this Island, on Wednesday, the 9th of April, 1817, and has since continued the Administration thereof—NOW A PERIOD OF NEARLY SEVEN YEARS.

**SUCCESSION**  
OF THE  
**COMMANDANTS AT PORT DALRYMPLE.**

—000—

Lieutenant-Colonel Paterson, of the 102d Regiment.  
 Captain Brabyn, of the 102d Regiment.  
 Captain Kemp, of the 102d Regiment.  
 Captain Ritchie, of the 73d Regiment.  
 Major M'Kenzie, of the 46th Regiment.  
 Lieutenant-Colonel Stewart, of the 46th Regiment.  
 Lieutenant-Colonel Cimetiere, of the 48th Regiment.  
 Lieutenant-Colonel Cameron, of the 3d Regiment.

**HOLIDAYS**

*Upon which the Colours are hoisted at Mulgrave Battery.*

**JANUARY** 1—New Year's Day.  
 15—Duke of Gloucester's Birth Day.  
 29—The King's Accession to the Throne.  
**FEBRUARY** 16—Formation of the Dependency.  
 24—Duke of Cambridge's Birth Day.  
 27—Duke of Sussex's Birth Day.  
**MARCH** 1—St. David's Day.  
 17—St. Patrick's Day.  
**APRIL** 16—Good Friday.  
 19—Easter Monday.  
 23—St. George's Day.—King's Birth-day [kept.  
 25—Duchess of Gloucester's Birth Day.  
**MAY** 22—Princess Elizabeth's Birth Day.  
 27—Ascension Day.  
**JUNE** 5—Duke of Cumberland's Birth Day.  
**JULY** 19—The King's Coronation.  
 25—Duchess of Cambridge's Birth Day.  
**AUGUST** 16—Duke of York's Birth Day.  
 21—Duke of Clarence's Birth Day.  
**SEPT.** 29—Queen of Wirtemburgh's Birth Day.  
**NOV.** 3—Princess Sophia's Birth Day.  
 8—Princess Augusta Sophia's Birth Day.  
 30—St. Andrew's Day.  
**DEC.** 25—Christmas Day.

*Sovereigns and Princes of Europe.*

**GREAT BRITAIN AND IRELAND.**

**GEORGE IV.** King, (King of Hanover), &c. born 12th, and created Prince of Wales 17th of August 1762; appointed Prince Regent February 1811; succeeded his father George III, 29th January 1820, and crowned 19th July 1821; married 8th April 1795, his cousin, Princess Caroline Amelia of Brunswick, born 17th May 1768, and died 7th August 1821, by whom he had issue, Princess CHARLOTTE AUGUSTA, born 7th January 1796; married, May 2, 1816, His Royal Highness Leopold George Frederick, Duke of Saxe, Margrave of Meissen, Langrave of Thuringuen, Prince of Coburg of Saalfeld, born 1790; and died 6th November 1817.

His late Majesty, by Queen Charlotte of Mecklenburgh Strelitz (who died 17th November 1818), had also the following issue:—

*Brothers and Sisters to the King.*

2. **FREDERICK**, born 16th August 1763; Duke of York, &c. 27th November 1784; Titular Bishop of Osnaburgh; Commander in Chief; Field Marshal, &c. married, 29th September 1791, Frederica, Princess Royal of Prussia, born 7th May 1767, sister to the late King George III. She died 6th August 1820. No issue.  
 3. **WILLIAM HENRY**, born 21st August 1765; Duke of Clarence, &c. 16th May 1789; K. G. Admiral of the Fleet, &c. Married 11th July 1818, Princess Adelaide of Saxe Meiningen.  
 4. **CHARLOTTE AUGUSTA MATILDA**, born 29th September 1766, (Lady of the Russian Order of St. Catherine). Married 19th May 1797, Charles William, King of Wirtemberg, who died in 1816.  
 5. **EDWARD**, born 2d November 1767; Duke of Kent, &c. 23d April 1799; K. G. Field Marshal. Married, 29th May 1818, and re-married in England 11th July, Princess Maria Louisa Victoria, Dowager of Leinengen, sister to Prince Leopold. Died 23d January 1820. Issue, Princess Alexandrina Victoria, born 24th May 1819.  
 6. **SOPHIA AUGUSTA**, Princess, born 8th November 1768.  
 7. **ELIZABETH**, Princess, born 22d May 1770; married 7th April 1818, Philip Augustus Frederick, Prince of Hesse Homberg.  
 8. **ERNEST AUGUSTUS**, born 5th June 1771; Duke of Cumberland, &c. 23d April 1799; K. G., F. M. Married, 28th August 1814, re-married in England 29th August 1815, the Dowager Princess of Salms, daughter of Charles late Duke of Mecklenburgh Strelitz, his cousin. Issue, George Frederick Alexander Charles Ernest Augustus, born 27th May, 1819.



9. **AUGUSTUS FREDERICK**, born 27th January 1773, Duke of Sussex, &c. 7th November, 1801.

10. **ADOLPHUS FREDERICK**, born 24th February 1774; Duke of Cambridge, 27th November 1801; K. G. & F. M., &c. Married, 7th May, and re-married in England 1st June 1818, Princess Augusta, daughter of Prince Frederick of Hesse, born 26th July 1796. Issue, Prince George William Frederick Charles, born 26th March 1819; and Princess Augusta Caroline Charlotte Elizabeth Mary Sophia Louisa, born 19th July 1822.

11. **MARY**, Duchess of Gloucester, born 25th April 1776.

12. **SOPHIA**, Princess, born 3d November 1777.

13. **OCTAVIUS**, Prince, born 23d February 1779; died 3d May 1782.

14. **ALFRED**, Prince, born 23d September 1780; died 26th August 1782.

15. **AMELIA**, Princess, born 7th August 1783; died 2d November 1810.

*Issue of the late Duke of Gloucester, the King's uncle:*

1. **SOPHIA MATILDA**, born 29th May 1775.

2. **WILLIAM FREDERICK**, Duke of Gloucester, born 15th January 1776; succeeded his father, William Henry, 25th August 1805; married 22d July 1816, his cousin Princess Mary.

#### AUSTRIA.

**Francis II.** born February 12, 1768, Emperor of Austria, King of Hungary, Elector of Bohemia, Lombardy, and Venice, President of the German Confederation, K. G. and Arch Cup-bearer of the Holy Roman Empire; married, 1st, January 6, 1788, Elizabeth Wilhelmina Louisa of Wirtemberg; 2d, August 14, 1790, Maria Theresa, daughter of Ferdinand IV. King of the Two Sicilies; 3d, January 9, 1808, Maria Louisa Antoinette Beatrix, Archduchess of Austria, who died 7th of April, 1816; and 4th, October 19, 1816, the Princess Charlotte Boadicea of Luxemburg, born July 8, 1792.

#### GERMANY.

**BOHEMIA**.—Emperor of Austria, King.

**BRANDENBURG**.—King of Prussia, Margrave.

#### HANOVER.

*His Britannic Majesty, King George VI.*—Governor and Commander in Chief, His Royal Highness the Duke of Cambridge, Field Marshal, K. G. and K. C. B.

#### WIRTEMBERG.

**Frederick William Charles**, King, K. G. C. B.; born 1781; succeeded his father, Frederick, 1816; married, 1st, 1810, Charlotte, Princess of Bavaria (divorced); 2d, Catherine,

Duchess Dowager of Oldenburgh, sister of the Emperor of Russia, who died 1819; 3d, in 1820, the Princess Paulina of Wirtemberg. Prince Paul is presumptive heir.

#### BADEN.

**Louis William**, Grand Duke, born 1763; succeeded his nephew, Charles Louis, in 1818. A widower.

#### SAXE COBURG AND SAALFELD.

**Ernest Anthony Charles**, Duke of Saxe Coburg Saalfeld, born January 2, 1784; succeeded his father, Francis, the late Duke, Dec. 9, 1806; married July 31, 1817, Dorothea Louisa Pauline, Princess of Saxe Gotha.

#### RUSSIA.

**Alexander I.** Emperor of all the Russias, and King of Poland, K. G. D. C. L. born Dec. 23, 1777; married October 8, 1793, Louisa Maria Augusta Elizabeth Alexiowna, niece of the Hereditary Prince of Baden, born January 24, 1779.

#### PRUSSIA.

**Frederick William III.** King of Prussia, Margrave of Brandenburg, and Sovereign Duke of Silesia, K. G. and D. C. L. born August 3, 1770; married Dec. 24, 1793, the Princess Louisa Augusta Wilhelmina of Mecklenburg Strelitz.

#### FRANCE.

**Louis XVIII.** King of France and Navarre, K. G. succeeded 8th June, 1795. Born November 17, 1755; married, 1771, Josephine Louisa of Savoy, who died Nov. 13, 1810.

#### SPAIN.

**Ferdinand VII.** born October 13, 1784, crowned March 1808, by the abdication of his father, Charles I.; married September 19, 1816, Donna Maria Isabella, Infanta of Portugal, who died December 29, 1818.

#### PORTUGAL.

**John Maria Joseph Louis**, King of the United Kingdom of Portugal, Brazil, and Algarves; born May 13, 1767; married Jan. 9, 1790, Charlotte Joaquina, Infanta of Spain, born April 25, 1775.

#### SWEDEN AND NORWAY.

**Charles Jean Bernadotte**, French Prince of Ponte Corvo, born 1764; elected Crown Prince (on the death of Prince Christian of Holstein-Augustenburg) 1810; succeeded Charles XIII. as King, in 1818; married, 1798, Eugenie Bernadine de Clary.

#### DENMARK.

**Frederick VI.** King of Denmark, Duke of Pomerania, born Jan. 28, 1768, married the Princess Sophia Frederica of Hesse Cassel, born October 28, 1767.

## NETHERLANDS.

*Prince William Frederick VI.* of Orange-Nassau, King of the Netherlands, and Grand Duke of Luxemburg, K. G. son of William V. born August 24, 1772; married to Frederica Louisa, born Nov. 18, 1774, sister of the King of Prussia, in October, 1791. Inaugurated King of the Netherlands, in Brussels, September 21, 1815.

## ITALIAN STATES.

LOMBARDY AND VENICE.—Emperor of Austria, King.  
SARDINIA.

*Charles Felix Joseph*, King (King of Genoa 1815); born 1763; succeeded on the abdication of his brother, Victor Emanuel, 1821; married, 1807, Maria, daughter of the King of Naples. Charles Albert of Savoy, Prince of Carignano, is presumptive heir.

## NAPLES AND SICILY.

*Ferdinand IV.* King of Naples and the Two Sicilies, born January 12, 1751; ascended the throne October 6, 1759, on his father's becoming King of Spain; married the Princess Caroline, aunt of the present Emperor of Austria, who died September 8, 1814.

## ROME.

*Pius VII. Gregory Barnabas Chiaramonti*, born August 14, 1742; Cardinal in Feb. 1785; elected Pope at Venice March 14, 1800; crowned 21st of the same month.

## TUSCANY.

*Ferdinand*, Grand Duke; born 1769; married, in 1790, Louisa Amelia, daughter of the King of Naples, (died 1802).

## PARMA.

*Maria Louisa*, Grand Duchess of Parma, Placentia, &c.; born 1791; eldest daughter of the Emperor of Austria. Married, 1810, Napoleon Bonaparte, late Emperor of France (died at St. Helena, 1821). Issue, Napoleon Francis Joseph Charles, Duke of Reichstadt (late King of Rome), born March 20, 1811; coadjutor to the Archbishop of Olmutz.

## SWITZERLAND.

Confederation of twenty-two independent Cantons.—Landaman *M. de Wyss*, Burgomaster of Zurich.

## TURKEY.

*Mahomet VI.* Sultan (or Grand Seignor) of the Ottoman Empire; born 1785; succeeded Selim III. 1808.

## AMERICA.

*James Munroe, Esq.* President, inaugurated March 4, 1817. Vice-President, Daniel D. Tompkins, Esq.

## THE KING'S MINISTERS.

First Lord of the Treasury . . .	Earl of Liverpool.	
Lord Chancellor . . . . .	Earl of Eldon.	
Lord Privy Seal . . . . .	Earl of Westmorland.	
President of the Council . . . .	Earl of Harrowby.	
Secretaries { Home Department	Right Hon. Robert Peel.	
	of State { Foreign . . . . .	Rt. Hon. George Canning.
	Colonies and War	Earl Bathurst.
Chancellor of the Exchequer . .	Rt. Hon. F. J. Robinson.	
First Lord of the Admiralty . .	Viscount Melville.	
Master General of the Ordnance .	Duke of Wellington.	
President of the Board of Control .	Rt. Hon. C. W. W. Wynn.	
Chancellor of Duchy of Lancaster .	Rt. Hon. Lord Bexley.	
Master of the Mint . . . . .	Lord Maryborough.	
Treasurer of the Navy, and Pre- } sident of the Board of Trade }	Rt. Hon. W. Huskissen.	
	Viscount Sidmouth.	

## The above form the CABINET.

<i>Lord Chamberlain</i> . . . . .	Duke of Montrose.
<i>Lord Steward</i> . . . . .	Marquis Conyngham.
<i>Master of the Horse</i> . . . . .	Duke of Dorset.
<i>Secretary at War</i> . . . . .	Viscount Palmerston.
<i>Paymaster of the Forces</i> . . . .	Rt. Hon. Sir Charles Long.
<i>Vice Pres. of the Board of Trade</i> .	Rt. Hon. Thomas Wallace.
<i>Postmasters General</i> . . . . .	Earl of Chichester.
	Marquis of Salisbury.
<i>Lieut.-General of the Ordnance</i> .	Viscount Beresford.
<i>First Com. of Land Revenue</i> . .	
<i>Attorney General</i> . . . . .	Sir Robert Gifford, knt.
<i>Solicitor General</i> . . . . .	Sir John S. Copley, knt.

## IRELAND.

<i>Lord Lieutenant of Ireland</i> . .	Marquis Wellesley.
<i>Lord Chancellor</i> . . . . .	Lord Mannors.
<i>Commander of the Forces</i> . . .	
<i>Chief Secretary</i> . . . . .	Rt. Hon. Henry Goulburn.
<i>Vice Treasurer</i> . . . . .	Rt. Hon. Sir G. F. Hill, bt.
<i>Attorney General</i> . . . . .	Rt. Hon. Wm. C. Plunkett.
<i>Solicitor General</i> . . . . .	Rt. Hon. Charles K. Bushe.



ARRIVAL OF VESSELS AT HOBART TOWN,  
AND  
**THEIR DEPARTURE,**  
FROM THE 1st JUNE, 1816, TO THE 31st DECEMBER, 1823,  
ALPHABETICALLY ARRANGED.

↳ The Names of His Majesty's Ships and Vessels in SMALL CAPITAL Characters; and those of America and other Foreign Vessels in *Italics*.

<i>Ships' Names.</i>	<i>Com.</i>	<i>Arrived.</i>	<i>Whence.</i>	<i>Cargo.</i>	<i>Departure.</i>	<i>Where bound.</i>
Adamante, whaler	Elder	Sept. 20, 1816	England	mer. & pas.	Nov. 3, 1816	Fishery
Alert, brig	Brodie	July 6, 1817	Mauritius	merch.	July 16, 1817	Sydney
Ann, whaler	Wilkinson	Dec. 8, 1817	England	to fish here	Nov. 19, 1818	England
Alert, brig	Brodie	Jan. 21, 1819	Java	merch.	Feb. 7, 1819	Sydney
Admiral Cockburn	Briggs	July 4, 1819	England	merch.	July 23, 1819	ditto
The same	Briggs	Sept. 16, 1819	Sydney	prisoners	Oct. 10, 1819	ditto
The same	Briggs	Dec. 1, 1819	Sydney	prisoners	Dec. 19, 1819	ditto
Atlas	Short	Jan. 18, 1820	Sydney	troops	Feb. 2, 1820	Madras
Actæon	Mackey	April 9, 1820	Mauritius	merch.	April 24, 1820	Sydney
Active, brig	Thompson	April 23, 1820	Sydney	to fish here	Aug. 12, 1820	ditto
Actæon	Gordon	July 19, 1820	Sydney	passengers	Oct. 16, 1820	ditto (lost)
Ann, whaler	Lowry	April 29, 1821	N. Zealand	oil	Sept. 26, 1821	New Zealand
Active, brig	Thompson	May 11, 1821	Sydney	to fish here	Aug. 21, 1821	Sydney
Amboyne	D. Wilson	Nov. 27, 1821	Mauritius	teas, &c.	Dec. 18, 1821	ditto
The same	D. Wilson	Nov. 1, 1822	China	teas, &c.	Nov. 17, 1822	ditto

<i>Ships' Names.</i>	<i>Com.</i>	<i>Arrived.</i>	<i>Whence.</i>	<i>Cargo.</i>	<i>Departure.</i>	<i>Where bound.</i>
Arab	Brown	Nov. 6, 1822	England	prisoners	Nov. 16, 1822	Sydney
Admiral Cockburn	Briggs	Nov. 22, 1822	England	merch.	Dec. 18, 1822	ditto
The same	Briggs	March 4, 1823	Sydney	passengers	Mar. 15, 1823	Port Louis
Andromeda	Muddle	May 7, 1823	Scotland	passengers	July 24, 1823	Sydney
Ann, brig	Frankland	May 16, 1823	England	passengers	July 3, 1823	ditto
Avon, brig	Sumner	July 7, 1823	England	sugar, &c.	July 25, 1823	ditto
Admiral Cockburn	Briggs	Sept. 11, 1823	Sydney	sundries	Oct. 12, 1823	Mauritius
Albion	W. R. Best	Oct. 21, 1823	England	prisoners	Nov. 4, 1823	Sydney
Ann, brig	Moon	Nov. 1, 1823	Sydney	passengers	Dec. 14, 1823	Port Dal.
Allies, brig	Kirton	Nov. 3, 1823	Sydney	sundries	in port	England
Baring	Lamb	June 14, 1819	England	prisoners	June 21, 1819	Sydney
Bombay	Young	Nov. 13, 1819	Calcutta	merch.	Dec. 5, 1819	ditto
Brixton	Lusk	Aug. 8, 1821	England	passengers	Sept. 8, 1821	ditto
The same	Lusk	Dec. 4, 1821	Sydney	col. produce	Dec. 29, 1821	England
Britomart	D. Peache	Feb. 4, 1822	England	passengers	Feb. 26, 1822	Sydney
Brougham, brig	Piot	Jan. 4, 1823	Cape G. H.	merch.	Jan. 23, 1823	ditto
Brixton	Lusk	Jan. 21, 1823	England	passengers	Feb. 6, 1823	ditto
The same	Lusk	April 25, 1823	Sydney	sundries	May 12, 1823	ditto
Berwick	Jeffery	June 21, 1823	England	passengers	July 30, 1823	ditto
Brutus, brig	J. Smith	Aug. 14, 1823	England	passengers	Sept. 16, 1823	ditto
Belinda	Coverdale	Nov. 12, 1823	England	passengers	in port	ditto
Cochin	Jones	May —, 1816	Calcutta	merch.	Jan. 16, 1817	Sydney
The same	Jones	April 6, 1817	Sydney Lt. Gov. Sorell		July 1, 1817	ditto

<i>Ships' Names.</i>	<i>Com.</i>	<i>Arrived.</i>	<i>Whence.</i>	<i>Cargo.</i>	<i>Departure.</i>	<i>Where bound.</i>
Charlotte	Moffett	Nov. 23, 1817	Calcutta	merch.	Dec. 22, 1817	Sydney
Campb. Macquarie	Siddons	Dec. 12, 1817	Sydney	sealing gang	Dec. 15, 1817	Mac. Island
Chapman	Drake	Jan. 5, 1818	Sydney	bailast	Jan. 16, 1818	Batavia
Clarion, brig	Gyzelaar	April 13, 1818	Boston	sundries	May 14, 1818	Fishery
Claudine	Welsh	Feb. 12, 1820	England	mer. & pas.	Feb. 18, 1820	Sydney
Castle Forbes	Reid	Feb. 28, 1820	Sydney	prisoners	Mar. 26, 1820	Batavia
COROMANDEL	Downie	Mar. 12, 1820	England	prisoners	Mar. 25, 1820	Sydney
Campb. Macquarie	T. Whyte	Sept. 5, 1820	Launceston	merch.	Oct. 6, 1820	ditto
Caledonia	Carns	Nov. 17, 1820	England	prisoners	Dec. 9, 1820	ditto
Campb. Macquarie	Barnard	Nov. 24, 1820	Sydney	sundries	Jan. 13, 1821	ditto
Caroline	Taylor	Nov. 27, 1820	England	passengers	Dec. 21, 1820	ditto
Caledonia	Carns	Jan. 16, 1821	Sydney	Ju. Wylde	Jan. 20, 1821	Batavia
Caroline	Taylor	Feb. 17, 1821	Sydney	sundries	June 30, 1821	Sydney
Campb. Macquarie	Barnard	Feb. 18, 1821	Sydney	sundries	March 4, 1821	ditto
The same	Barnard	April 16, 1821	Sydney	merch.	June 15, 1821	ditto
Countess Harcourt	Bunn	July 27, 1821	England	prisoners	Aug. 14, 1821	ditto
Campb. Macquarie	Barnard	Sept 11, 1821	Sydney	sundries	Oct. 3, 1821	ditto
Caroline	Taylor	Oct. 30, 1821	Sydney	horses	Nov. 15, 1821	Fishery
Claudine	Crabtree	Dec. 15, 1821	England	prisoners	Dec. 27, 1821	Sydney
Castle Forbes	J. W. Ord	Mar. 1, 1822	England	passengers	April 15, 1822	ditto
The same	J. W. Ord	June 23, 1822	Sydney	live stock	Aug. 4, 1822	ditto
Calder, brig	Dillon	Sept. 28, 1822	Calcutta	merch.	Nov. 10, 1822	S. America
Clydesdale	M. Kellar	Oct. 13, 1822	England	merch.	Oct. 25, 1822	Sydney

<i>Ships' Names.</i>	<i>Com.</i>	<i>Arrived.</i>	<i>Whence.</i>	<i>Cargo.</i>	<i>Departure.</i>	<i>Where bound.</i>
Caledonia	Carns	Nov. 6, 1822	England	prisoners	Nov. 15, 1822	Sydney
Christiana, brig	Hall	Nov. 22, 1822	England	passengers	Jan. 1, 1823	ditto
Castle Forbes	J. W. Ord	Dec. 9, 1822	Sydney	passengers	Dec. 23, 1822	England
Caledonia	Carns	Jan. 31, 1823	Sydney	Ju. Wylde	Feb. 9, 1823	Madras
Caroline, brig	Pearson	Feb. 26, 1823	Port Louis	merch.	April 17, 1823	India
Caroline	Taylor	Feb. 23, 1823	N. Shetland	skins	April 17, 1823	Macquarie Is.
Creuzer	Lazaroff	May 30, 1823	Russia	discovery	June 21, 1823	on discovery
Caroline	Taylor	July 11, 1823	Mac. Island	elephant oil	Oct. 2, 1823	Macquarie Is.
Competitor	Ascough	Aug. 3, 1823	England	prisoners	Aug. 24, 1823	Sydney
Commodore Hayes	Moncrief	Aug. 16, 1823	England	prisoners	Aug. 23, 1823	ditto
Courier, brig	Mainwaring	Dec. 21, 1823	England	passengers	in port	ditto
Duke of Wellington	Howard	Oct. 22, 1817	England	merch.	Oct. 31, 1817	Sydney
Derwent, schooner	Carr	Jan. 19, 1818	Mauritius	merch.	Mar. 11, 1818	Mauritius
Duke of Wellington	Howard	Feb. 20, 1818	Sydney	m. & f. pris.	June 28, 1818	ditto
Derwent, schooner	Carr	July 20, 1818	Mauritius	sundries	Aug. 14, 1818	Sydney
The same	Carr	Nov. 4, 1818	Sydney	passengers	Dec. 13, 1818	ditto
The same	Carr	Jan. 20, 1819	ditto	passengers	Feb. 22, 1819	Batavia
Daphne, brig	Howard	July 1, 1819	ditto	passengers	Aug. 8, 1819	Sydney
The same	(wrecked)	Oct. 26, 1819	in Kent's	Group).		
Dragon	Brady	Aug. 11, 1819	Bengal	merch.	Sept. 1, 1819	ditto
David Shaw	Jordain	Oct. 11, 1819	England	mer. & pas.	Nov. 4, 1819	ditto
DROMEDARY	Skinner	Jan. 10, 1820	England	male pris.	Jan. 22, 1820	ditto
Duchess of York	Collins	Feb. 25, 1821	England	passengers	Mar. 25, 1821	ditto



<i>Ships' Names.</i>	<i>Com.</i>	<i>Arrived.</i>	<i>Whence.</i>	<i>Cargo.</i>	<i>Departure.</i>	<i>Where bound.</i>
Duchess of York	Collins	June 7, 1821	Sydney	horses, &c.	June 15, 1821	Sydney
DUKE of YORK	Kelly	April 3, 1822	Macq. Har.	Huon-pine	stationary	
Denmark Hill	Foreman	May 18, 1822	England	passengers	June 13, 1822	ditto
Deveron, brig	W. Wilson	June 19, 1822	England	passengers	Aug. 4, 1822	ditto
The same	W. Wilson	Oct. 3, 1822	Sydney	troops	Jan. 12, 1823	ditto
The same	W. Wilson	April 2, 1823	ditto	col. produce	June 6, 1823	England
Dragon, brig	Walker	May 11, 1823	Manilla	sundries	Oct. 5, 1823	Manilla
Enterprise	Coffin	Dec. 15, 1816	Philadelphi	whaling		Fishery
ELIZ. HENRIETTA	Whyte	April 29, 1817	Sydney	stores	May 18, 1817	Sydney
The same	Whyte	Aug. 27, 1817	ditto	m. & f. pris.	Sept. 16, 1817	ditto
The same	Whyte	April 6, 1818	ditto	passengers	April —, 1818	
Elizabeth & Mary	Johnn	May 11, 1818	ditto	sealing gang	May 21, 1818	Macquarie Is.
ELIZ. HENRIETTA	D. Smith	Nov. 14, 1818	ditto	f. prisoners	Nov. 28, 1818	Sydney
The same	D. Smith	Feb. 20, 1819	ditto	prisoners	Mar. —, 1819	ditto
Eliza	Hunt	Mar. 27, 1820	ditto	Merino sh.	May 30, 1820	ditto
The same	Hunt	July 26, 1820	ditto	passengers	Aug. 29, 1820	ditto
ELIZ. HENRIETTA	D. Smith	Jan. 6, 1821	ditto	troops	Feb. —, 1821	ditto
Eliza	Hunt	Jan. 28, 1821	ditto	passengers	April 29, 1821	Batavia
Emerald	Elliott	Mar. 13, 1821	England	mer. & pas.	May 15, 1821	Macquarie Is.
ELIZ. HENRIETTA	Gray	May 25, 1821	Sydney	troops	June 23, 1821	Sydney
Emerald	Elliott	June 11, 1821	Macq. Is.	ballast	Aug. 19, 1821	Hunter's Is.
The same	Wright	Oct. 19, 1821	Sydney	sundries	Nov. 7, 1821	Macquarie Is.
The same	Elliott	June 14, 1822	Rio Janeiro	tobacco, &c.	June 30, 1822	Sydney

<i>Ships' Names.</i>	<i>Com.</i>	<i>Arrived.</i>	<i>Whence.</i>	<i>Cargo.</i>	<i>Departure.</i>	<i>Where bound.</i>
ELIZ. HENRIETTA	H. Marsh	Aug. 9, 1822	Sydney	troops	Aug. 21, 1822	Sydney
Emerald	Elliott	Sept. 7, 1822	ditto	ballast	Sept. 13, 1822	Macquarie Is.
The same	Elliott	Oct. 31, 1822	Macq. Isl.	elephant oil	Dec. 4, 1822	England
Elizabeth Mary, sc.	Marshall	Nov. 15, 1822	Sydney	cedar	Dec. 3, 1822	Sydney
ELIZ. HENRIETTA	Marsh	Dec. 8, 1822	ditto	horses, &c.	Dec. 29, 1822	ditto
Elizabeth Mary, sc.	Marshall	Feb. 11, 1823	ditto	in sickness	Feb. 15, 1823	Macquarie Is.
Elizabeth	Dacre	July 12, 1823	England	passengers	Aug. 1, 1823	Sydney
Frederick	Williams	May —, 1816	Calcutta	merch.	June 7, 1816	ditto
Farquhar	Goff	Feb. 13, 1817	Sydney	ballast	Feb. 16, 1817	Mauritius
Frederick	Williams	Oct. 14, 1817	Batavia	merch.	Nov. 13, 1817	Sydney
The same	Williams	Feb. 15, 1818	Sydney	ballast	Mar. 18, 1818	Mauritius
Fame, brig	Grimes	Aug. 11, 1822	England	passengers	Sept. 10, 1822	Sydney
Francis, brig	Benson	Aug. 19, 1823	England	passengers	Sept. 17, 1823	ditto
Gov. Macquarie, b.	Reibey	Aug. 9, 1817	Sydney	troops, &c.	Sept. 10, 1817	P. Dalruple
The same	Reibey	Jan. 19, 1818	ditto	merch.	Feb. 4, 1818	ditto
Greyhound, brig	Ritchie	Feb. 25, 1818	Calcutta	India goods	April 7, 1818	Sydney
The same, (lost)	Ritchie	Mar. 23, 1819	Calcutta	merch.	April 11, 1819	ditto
Governor Sorell, sl.	Risk	first voyage	built here	sundries	April 31, 1819	Launceston
The same	Risk	July 4, 1819	Launceston	sundries	lost in 1819	at sea
Gov. Macquarie, b.	Heaney	Sept. 4, 1819	Sydney	sundries	Oct. 6, 1819	Sydney
Guide, brig	Higgins	Feb. 4, 1820	Calcutta	merch.	Feb. 18, 1820	ditto
Gov. Macquarie, b.	Heaney	Feb. 15, 1820	Sydney	sundries	Mar. 23, 1820	Port Davey
Greyhound, brig	Campbell	Mar. 2, 1820	China	teas, &c.	March 9, 1820	Sydney

<i>Ships' Names.</i>	<i>Com.</i>	<i>Arrived.</i>	<i>Whence.</i>	<i>Cargo.</i>	<i>Departure.</i>	<i>Where bound.</i>
Guildford	Johnson	Oct. 28, 1820	Sydney	prisoners	Nov. 30, 1820	Calcutta
Governor Farquhar	Tregrosse	Mar. 8, 1821	Mauritius	merch.	April 21, 1821	Sydney
Guide, brig	Gordon	Mar. 8, 1821	Calcutta	merch.	Mar. 30, 1821	Launceston
Good Hope	Humphreys	April 5, 1821	Calcutta	merch.	April 18, 1821	Valparasio
Governor Sorell	Marsh	April 4, 1821	Sydney	passengers	May 19, 1821	Sydney
Grace	Lethbridge	Aug. 10, 1821	England	passengers	Sept. 17, 1821	ditto
The same	Lethbridge	Nov. 9, 1821	Sydney	live stock	Nov. 20, 1821	ditto
Granada	Donald	Dec. 17, 1821	ditto	live stock	Dec. 27, 1821	Batavia
Glory, brig	Day	May 31, 1822	ditto	sundries	June 15, 1822	Launceston
Governor Brisbane	Nolbrow	June 13, 1822	Mauritius	merch.	July 7, 1822	Sydney
The same, sch.	Nolbrow	Sept. 6, 1822	Sydney	sundries	Nov. —, 1822	Mauritius
<i>General Gates</i>	Riggs	Nov. 8, 1822	Batavia	to refit	Dec. 5, 1822	Fishery
Governor Phillips	Maingy	April 2, 1823	Calcutta	merch.	Mar. 31, 1823	Sydney
The same, brig	Maingy	July 31, 1823	Sydney	coals	Nov. 20, 1823	Mauritius
Greenock, A. C. S.	Richmond	Nov. 21, 1823	Leith	passengers	Dec. 25, 1823	Sydney
Henrietta, packet	Kelly	Aug. 24, 1816	Sydney	merch.	Oct. —, 1816	Sealing voy.
Harriott	Jones	Mar. 21, 1817	England	passengers	May 12, 1817	Sydney
Henrietta, packet	Feen	Mar. 28, 1817	Kangaroo I.	salt & skins	May 24, 1817	ditto
Hunter	Hodges	Mar. 28, 1817	Bengal	merch.	—, 1817	ditto
Henrietta, packet	M'Carty	Oct. 27, 1817	Sydney	sundries	Jan. 20, 1818	Gordon River
Harriott	Jones	Dec. 29, 1817	ditto	passengers	Dec. 29, 1817	England
Henrietta, packet	Feen	Feb. 23, 1818	Gordon R.	Huon-pine	Feb. 25, 1818	Sydney
Hibernia	Lennon	May 11, 1819	England	prisoners	June 7, 1819	ditto

<i>Ships' Names.</i>	<i>Com.</i>	<i>Arrived.</i>	<i>Whence.</i>	<i>Cargo.</i>	<i>Departure.</i>	<i>Where bound.</i>
Haldane, brig	Orman	Mar. 8, 1820	Calcutta	sundries	Mar. 17, 1820	Sydney
The same	Orman	Nov. 22, 1820	Calcutta	sundries	Dec. 7, 1820	ditto
Hawies, brig	Jamieson	April 21, 1822	Sydney	sundries	May —, 1822	ditto
Heroine	Ostler	Sept. 10, 1822	England	passengers	Oct. 6, 1822	ditto
The same	Ostler	Dec. 26, 1822	Sydney	to refit	Jan. 5, 1823	Mauritius
Jupiter, brig	Furgesson	Dec. 12, 1816	Calcutta	sundries	Dec. 31, 1816	Sydney
The same	Furgesson	Mar. 28, 1817	Sydney	merch.	May 24, 1817	ditto
The same	Bunster	Aug. 23, 1817	ditto	prisoners	Oct. 31, 1817	Fishery
Jeune Ferdinand	Piot	Nov. 28, 1817	Mauritius	merch.	Dec. 12, 1817	Sydney
Jupiter, brig	Bunster	Dec. 7, 1817	Gordon R.	Huon-pine	Jan. 1, 1818	Kangaroo Is.
The same	Bunster	Mar. 2, 1818	Kangaroo I.	salt	May 14, 1818	Launceston
The same	Ainsworth	Aug. 4, 1818	P. Dalrymp.	wheat	Aug. 20, 1818	Sydney
The same	Ainsworth	Oct. 11, 1818	Sydney	sundries	Oct. 30, 1818	Launceston
The same	Ainsworth	April 1, 1819	Kangaroo I.	skins & salt	Aug. 29, 1819	Sydney
The same	Risk	Dec. 5, 1819	Sydney	sundries	Oct. 16, 1820	ditto
John Shore, brig	Williams	Dec. 9, 1819	Calcutta	teas, &c.	Jan. 18, 1820	ditto
Juliana	Ogilvie	Dec. 29, 1820	England	prisoners	Jan. 19, 1821	ditto
Jupiter, brig	Risk	Jan. 5, 1821	Sydney	sundries	Jan. 20, 1821	Launceston
Jessie	Nolbrow	Feb. 26, 1821	England	passengers	Mar. 21, 1821	Sydney
Jupiter, brig	Risk	July 23, 1821	Sydney	sundries	Oct. —, 1821	Hunter's Is.
Jane	Sutherland	Oct. 4, 1821	Batavia	spirits	Oct. 12, 1821	Sydney
John Bull	Orman	Dec. 22, 1821	Calcutta	teas, &c.	Dec. 27, 1821	ditto
Jupiter, brig	Martin	Jan. 6, 1822	Hunter's I.	spirits	Jan. 27, 1822	ditto



<i>Ships' Names.</i>	<i>Com.</i>	<i>Arrived.</i>	<i>Whence.</i>	<i>Cargo.</i>	<i>Departure.</i>	<i>Where bound.</i>
John Bull	Orman	Feb. 22, 1822	Sydney	merch.	March 9, 1822	Calcutta
Jupiter, brig	Martin	Mar. 1, 1822	ditto	sundries	June 20, 1822	Sydney
The same	Martin	Oct. 31, 1822	P. Dalrymp.	sundries	Nov. 27, 1822	Launceston
John Bull	Orman	Nov. 18, 1822	Calcutta	merch.	Nov. 25, 1822	Sydney
Jupiter, brig	Martin	Jan. 12, 1823	Launceston	wheat	Feb. —, 1823	Launceston
John Bull	Orman	Jan. 31, 1823	Sydney	sundries	April 17, 1823	Sydney
Jupiter, brig	Martin	Mar. 24, 1823	P. Dalrymp.	col. produce	April 17, 1823	P. Dalrymple
John Shore, brig	Bowman	June 22, 1823	Calcutta	merch.	June 29, 1823	Sydney
Jupiter	Park	Nov. 6, 1823	England	Govt. pas.	Nov. 18, 1823	ditto
KANGAROO, brig	Jeffreys	Oct. 16, 1816	Sydney	f. prisoners	Nov. 4, 1816	ditto
The same	Jeffreys	Dec. 28, 1816	ditto	prisoners	Jan. 16, 1817	ditto
The same	Jeffreys	April 30, 1817	ditto	dispatches	May 13, 1817	England
Kent, whaler	Graydon	May 8, 1822	Fejee Isl.	sperm oil	June 2, 1822	New Zealand
King George, wh.	C. Bryant	July 17, 1823	England	to refit	Oct. 28, 1823	Fishery
Lady Elliott	Abbott	May —, 1816	India	merch.	June 18, 1816	Sydney
Lynx, brig	Read	Nov. 1, 1816	Batavia	teas, &c.	Nov. 23, 1816	ditto
Lady Castlereagh	Weltden	June 11, 1818	England	prisoners	June 26, 1818	Madras
Lord Melville	Wetherall	Dec. 18, 1818	England	prisoners	Jan. 14, 1819	Batavia
Little Mary, sch.	Rollo	April 13, 1819	Mauritius	merch.	May 4, 1819	Sydney
The same	Rollo	Aug. 13, 1819	Sydney	merch.	Sept. 14, 1819	ditto
Lynx, brig	Siddons	July 22, 1820	ditto	teas	Aug. 15, 1820	ditto
Lady Ridley	Weir	June 27, 1821	England	prisoners	July 15, 1821	ditto
Lusitania	Langdon	Oct. 29, 1821	England	passengers	Nov. 18, 1821	ditto

<i>Ships' Names.</i>	<i>Com.</i>	<i>Arrived.</i>	<i>Whence.</i>	<i>Cargo.</i>	<i>Departure.</i>	<i>Where bound.</i>
Lord Hungerford	O'Brien	Dec. 26, 1821	England	prisoners	Jan. 3, 1822	Sydney
Lusitania	Langdon	Jan. 3, 1822	Sydney	passengers	Feb. 14, 1822	ditto
Little Mary, sch.	Kerr	Aug. 8, 1822	ditto	sundries	Sept. 9, 1822	Launceston
Lord Sidmouth	Ferrier	Feb. 10, 1823	England	f. prisoners	Feb. 19, 1823	Sydney
Laura	Vinay	Feb. 26, 1823	Port Louis	merch.	March 7, 1823	ditto
Lusitania	Langdon	April 25, 1823	England	passengers	May 22, 1823	ditto
Ladoga	Lazaroff	May 30, 1823	Russia	discovery	June 21, 1823	on discovery
Lusitania	Langdon	July 26, 1823	Sydney	col. produce	Oct. 8, 1823	England
Mary	Orman	May 19, 1817	Calcutta	merch.	May 29, 1817	Sydney
Mermaid, cutter	Scholey	Aug. 15, 1817	Calcutta	teas, &c.	Sept. 16, 1817	ditto
Minerva	Bell	June 7, 1818	Sydney	prisoners	June 26, 1818	Batavia
Mary	Orman	June 11, 1818	Calcutta	merch.	July 13, 1818	Sydney
MERMAID, cutter	King	Jan. 2, 1819	Sydney	Judge Field	Jan. 10, 1819	Macquarie H.
The same	King	Jan. 30, 1819	Macq. H.	.....	Feb. 6, 1819	Sydney
Mary	Orman	May 11, 1819	Calcutta	merch.	June 1, 1819	ditto
Martha, whaler	Apsey	June 7, 1819	Fishery	to fish here	Sept. 26, 1819	New Zealand
Martha, sloop	Perkins	Sept. 11, 1819	Sydney	sundries	Oct. 21, 1819	Sydney
Mary	Brown	Feb. 17, 1820	Calcutta	merch.	Feb. 23, 1820	ditto
Morley	Brown	Aug. 29, 1820	England	f. prisoners	Sept. 8, 1820	ditto
Maria	Walker	Dec. 1, 1820	England	prisoners	Dec. 21, 1820	ditto
Midas	Watson	Jan. 12, 1821	England	passengers	Feb. 4, 1821	ditto
Medway	Wight	Mar. 13, 1821	England	prisoners	April 10, 1821	ditto
Mary	Kneale	April 1, 1821	Liverpool	merch.	May 11, 1821	ditto

<i>Ships' Names.</i>	<i>Com.</i>	<i>Arrived.</i>	<i>Whence.</i>	<i>Cargo.</i>	<i>Departure.</i>	<i>Where bound.</i>
Midas	Beveridge	April 25, 1821	Sydney	G. Macquarie	May 10, 1821	Macquarie Is.
Mars. Wellington	Martin	May 28, 1821	England	passengers	June 16, 1821	Sydney
Midas	Beveridge	July 11, 1821	Macq. Isl.	ballast	July 26, 1821	ditto
Mary	Kneale	Aug. 30, 1821	Sydney	sundries	Sept. 18, 1821	England
Malabar	Ascough	Oct. 21, 1821	England	prisoners	Nov. 14, 1821	Sydney
Mariner	Douglass	Nov. 8, 1821	England	passengers	Dec. 2, 1821	ditto
Minstrel	Burns	Dec. 17, 1821	England	passengers	Jan. 1, 1822	ditto
Medway	B. Wight	April 14, 1822	Bengal	passengers	May 12, 1822	ditto
Mary Ann	Warington	May 2, 1822	England	f. prisoners	May 12, 1822	ditto
Midas	Kirkus	Aug. 18, 1822	Mauritius	sugar	Sept. 8, 1822	ditto
Macclesfield	J. Moore	Sept. 8, 1822	England	passengers	Oct. 6, 1822	ditto
Minerva, brig	J. Bell	Sept. 22, 1822	Falmouth	passengers	Nov. 10, 1822	ditto
Minerva, brig	D. Forbes	Nov. 8, 1822	London	passengers	Dec. 1, 1822	ditto
Morley	Holliday	Jan. 10, 1823	England	prisoners	Jan. 25, 1823	ditto
Minerva, brig	D. Forbes	Mar. 13, 1823	Sydney	cedar	April 1, 1823	ditto
Mariner	Herbert	Sept. 26, 1823	England	passengers	Oct. 12, 1823	ditto
The same	Herbert	Dec. 4, 1823	Sydney	horses, &c.	Dec. 27, 1823	Batavia
Mary	Steel	Oct. 5, 1823	England	prisoners	Oct. 12, 1823	Sydney
Nearchus	Baker	Nov. 23, 1821	Calcutta	merch.	Dec. 2, 1821	ditto
Nereus, brig	Payne	Mar. 16, 1822	Sydney	Govt. stores	Mar. 27, 1822	P. Dalrymple
The same	Payne	Aug. 31, 1823	P. Dalrymple	wheat	Oct. 11, 1823	ditto
Ontario, brig	Dorr	May —, 1816	America	merch.	July 9, 1816	Sydney
Pilot	Pexton	Sept. 28, 1817	England	prisoners	Oct. 15, 1817	ditto

<i>Ships' Names.</i>	<i>Com.</i>	<i>Arrived.</i>	<i>Whence.</i>	<i>Cargo.</i>	<i>Departure.</i>	<i>Where bound.</i>
Pilot	Pexton	Dec. 24, 1817	Sydney	ballast	Jan. 31, 1818	Batavia
Portsea	Nicholls	Nov. 13, 1818	ditto	to refit	Dec. 19, 1818	Mauritius
PRINCE LEOPOLD	G. Brown	Dec. 20, 1818	ditto	Govt. stores	Jan. 24, 1819	Sydney
The same	G. Brown	Mar. 29, 1819	ditto	Govt. stores	May 16, 1819	ditto
The same	Chace	July 1, 1819	Launceston	ballast	Aug. 12, 1819	ditto
The same	Chace	Dec. 5, 1819	Sydney	passengers	Aug. 3, 1820	Launceston
Prince Regent	Anderson	May 22, 1820	ditto	to fish here		Fishery
P. CHARLOTTE	Devine	June 24, 1820	ditto	f. prisoners	July 2, 1820	Sydney
The same	Devine	Sept. 13, 1820	ditto	stores	Sept. 27, 1820	ditto
PRINCE LEOPOLD	Chace	April 14, 1821	ditto	stores		stationary
Phatisalam	Dillon	(Lost on Hun-	ter's Island,	April 9, 1821	1, in a gale of	wind).
Providence	Herd	Dec. 17, 1821	England	f. prisoners	Dec. 31, 1821	Sydney
The same	Herd	April 9, 1822	Sydney	to refit	April 24, 1822	New Zealand
Phoenix	Wetherhead	May 20, 1822	England	prisoners	June 2, 1822	Sydney
Prince of Orange	J. Moncrief	July 23, 1822	England	prisoners	Sept. 12, 1822	Bengal
Princess Charlotte	J. Blyth	Jan. 19, 1823	England	passengers	Feb. 7, 1823	Sydney
Pallas, brig	Hamilton	April 1, 1823	Calcutta	merch.	May 4, 1823	ditto
Queen Charlotte, b.	Payne	Sept. 19, 1820	Sydney	sundries	Oct. —, 1820	ditto
II The same	Payne	Nov. —, 1820	ditto	sundries		ditto
Robert Quale, brig	Leslie	Nov. 13, 1819	England	sundries	Nov. 21, 1819	ditto
Regalia	F. Dixon	Nov. 30, 1819	England	passengers	Jan. 4, 1820	ditto
Recovery	Fotherly	Feb. 21, 1820	Sydney	Com. Bigge	Feb. 25, 1820	Batavia
Robert Quale, brig	Leslie	May 10, 1820	N. Zealand	fishing here	Sept. 8, 1820	England



<i>Ships' Names.</i>	<i>Com.</i>	<i>Arrived.</i>	<i>Whence.</i>	<i>Cargo.</i>	<i>Departure.</i>	<i>Where bound.</i>
Regalia	F. Dixon	May 12, 1820	Sea	fishing here	Oct. 8, 1820	Sydney
Rambler	Bewyer	Sept. 9, 1820	England	sperm oil	Oct. 13, 1820	Fishery
Regalia	F. Dixon	Mar. 1, 1821	Macq. Isl.	elephant oil	May 11, 1821	England
Royal George	Powditch	Mar. 28, 1822	Sydney	passengers	May 1, 1822	England
Richmond	Kay	April 30, 1822	England	prisoners	May 11, 1822	Sydney
Regalia	T. Collins	Dec. 30, 1822	England	passengers	Jan. 30, 1823	ditto
The same	T. Collins	May 10, 1823	Macq. Isl.	elephant oil	May 20, 1823	ditto
The same	T. Collins	Sept. 4, 1823	Sydney	live stock	Oct. 8, 1823	England
Sophia, brig	Feen	June 6, 1816	Gordon R.	Huon-pine	June 26, 1816	Fishery
Spring, brig	Wilkinson	1816	England	merch.	July 9, 1816	P. Dalrymple
Sophia, brig	Feen	Sept. 3, 1816	Fishery	oil	Oct. 12, 1816	Sydney
The same	Kelly	Dec. 22, 1816	Sydney	coals	Dec. 30, 1816	Mac. Harbour
The same	Kelly	Jan. 12, 1817	Port Davey	Huon-pine	Feb. 20, 1817	Mac. Harbour
The same	Kelly	Mar. 17, 1817	Port Davey	Huon-pine	Mar. 30, 1817	Mac. Harbour
The same	Kelly	April 29, 1817	Port Davey	Huon-pine	May 13, 1817	Mac. Harbour
The same	Kelly	June 9, 1819	Port Davey	Huon-pine	June 22, 1817	Fishery
Spring, brig		1816	England	merch.	May 18, 1817	Fishery
Sophia, brig	Kelly	Aug. 22, 1817	Fishery	oil	Nov. 12, 1817	Fishery
Spring, brig	Feen	Sept. 7, 1817	Fishery	oil	Jan. 19, 1818	England
Sophia, brig	Kelly	Mar. 22, 1818	N. Zealand	seal skins	May 24, 1818	Sydney
Sinbad, schooner	Payne	May 18, 1818	Sydney	sundries	June 22, 1818	Launceston
Sophia, brig	Kelly	July 11, 1818	ditto	passengers	—, 1818	Mac. Harbour
Sinbad, schooner	Payne	Nov. 13, 1818	ditto	sundries	Dec. 1, 1818	Launceston

<i>Ships' Names.</i>	<i>Com.</i>	<i>Arrived.</i>	<i>Whence.</i>	<i>Cargo.</i>	<i>Departure.</i>	<i>Where bound.</i>
Sophia, brig	Kelly	Dec. 20, 1818	Macq. Har.	Huon-pine	Dec. 27, 1818	Mac. Harbour
The same	Kelly	Jan. 30, 1819	Macq. Har.	Huon-pine	Feb. 4, 1820	Launceston
Surrey	Raine	Mar. 18, 1819	England	prisoners	April 7, 1819	Sydney
Sinbad, schooner	Payne	Oct. 20, 1819	Sydney	sundries	April 15, 1820	ditto
St. Michael	Dillon	Nov. 9, 1819	Calcutta	merch.	Nov. 20, 1819	ditto
Seaflower	Spiers	April 18, 1820	Bengal	merch.	April 24, 1820	ditto
Saracen	Kerr	April 25, 1820	England	passengers	May 4, 1820	ditto
Sophia, brig	Brown	April 30, 1820	Kangaroo I.	salt & skins	Nov. 25, 1820	Bass's Straits
Sinbad, schooner	Payne	May 14, 1820	Sydney	sundries		
Surrey	Raine	Aug. 20, 1820	England	passengers	Sept. 8, 1820	Sydney
St. Michael	H. Marsh	Sept. 25, 1820	Calcutta	merch.	Oct. 16, 1820	ditto
Sophia, brig	Reed	Sept. 11, 1820	Kangaroo I.	salt & skins		
Skelton	J. Dixon	Nov. 27, 1820	Leith	passengers	Jan. 5, 1821	ditto
St. Antonio	Heming	Mar. 21, 1821	Calcutta	merch.	April 19, 1821	England
St. Michael	Marsh	April 4, 1821	Sydney	passengers		
Seringapatam	Joy	June 2, 1822	Fishery	sperm oil	July 24, 1822	England
Southworth	Sampson	Aug. 15, 1822	Batavia	merch.	Aug. 23, 1822	Sydney
Skelton	J. Dixon	Dec. 24, 1822	England	passengers	Jan. 29, 1823	ditto
SATELLITE, brig	Capt. Currie	Jan. 31, 1823	Sydney	On a cruise	Mar. 8, 1823	Sydney
Skelton	J. Dixon	June 8, 1823	Sydney	sundries	Sept. 5, 1823	England
S. Godfrey Webster	Rennoldson	Dec. 28, 1823	England	prisoners	in port	Sydney
Tiger	Brash	Jan. 22, 1822	England	passengers	Feb. 12, 1822	ditto
Thalia, brig	Welsh	April 3, 1822	England	passengers	April 21, 1822	ditto

<i>Ships' Names.</i>	<i>Com.</i>	<i>Arrived.</i>	<i>Whence.</i>	<i>Cargo.</i>	<i>Departure.</i>	<i>Where bound.</i>
Tiger	Brash	April 18, 1822	Sydney	passengers	May 26, 1822	Cape of G. H.
Triton, brig	Templeton	June 5, 1822	Bengal	sundries	July 4, 1822	Valparasio
Thalia	Munro	April 27, 1823	England	passengers	June 1, 1823	Sydney
Thalia, brig	Shout	May 3, 1823	Cape G. H.	wines	Oct. 12, 1823	New Zealand
Thalia	Munro	Aug. 24, 1823	Sydney	to refit	Aug. 28, 1823	Batavia
Victorine, schooner	Vinay	Oct. 27, 1820	Mauritius	sugar	Dec. 20, 1820	Sydney
The same	Vinay	Feb. 9, 1821	Sydney	sundries	Sept. 26, 1821	Oyster Bay
The same	Risk	Oct. 31, 1821	Oyster Bay	pine	Nov. 11, 1821	Sydney
The same	Risk	Jan. 12, 1822	England	passengers	June 16, 1822	ditto (lost)
Venerable	F. Dixon	Dec. 30, 1822	England	passengers	Jan. 16, 1823	ditto
Urania, brig	Newton	Jan. 14, 1823	England	passengers	July 10, 1823	ditto
Woodlark, brig	Moore	Aug. 4, 1820	England	merch.	Aug. 12, 1820	ditto
Westmoreland	Potton	May 5, 1821	England	passengers	May 23, 1821	ditto
William Shand	Kenn	Aug. 19, 1822	England	passengers	Sept. 14, 1822	ditto
WATERLOO, sch.	Kinghorne	Nov. 13, 1822	Macq. Har.	Huon-pine	built here	stationary
Wellington, brig	J. Bryant	Dec. 1, 1822	Sydney	passengers	Dec. 15, 1822	ditto
William Penn	O. Brown	July 6, 1823	Cork	s. provisions	July 19, 1823	ditto
Woodlark, brig	T. Brown	July 8, 1823	England	passengers	July 23, 1823	ditto
Woodlark, brig	Hedges	July 18, 1823	Fishery	sperm oil	July 31, 1823	ditto
Young Lachlan, s.	Simpson	Nov. 4, 1818	Sydney	sundries	Nov. 15, 1818	Launceston
The same	J. Thomson	Feb. 17, 1819	ditto	passengers	Feb. 27, 1819	Piratically
Young William, s.	Wheeler	Jan. 5, 1821	Straits	seal skins		[taken.]

## TELEGRAPHIC SIGNALS,

TO BE MADE

FROM MOUNT NELSON TO THE BATTERY.

- No. 1 Vessel in sight in or off Storm Bay Passage  
 2 Ditto between Cape Pillar and Bruné Island  
 3 Vessel seen is a ship  
 4 Ditto a brig  
 5 Ditto seen is a schooner  
 6 Ditto a sloop  
 7 Ditto belongs to the Colony  
 8 Government vessel

*Bearings of Vessels seen.*

- 9 Bears northerly.  
 10 Bears southerly.  
 11 Is in sight from Mount Nelson.

*Distance from the Heads.*

- 12 One league  
 13 Two ditto  
 14 Three ditto  
 15 Four ditto  
 16 Very distant  
 17 Distant; weather hazy; cannot denote whether a ship or brig, but looks large

- 18 Appears small  
 19 Approaching the Heads, or standing in  
 20 Got into the River  
 21 Approaching Crawfish Point  
 22 Vessel coming in has anchored; if after 20 or 21, denotes in the River  
 23 Vessel coming in that anchored, is under weigh  
 24 Vessel coming in, has got into Storm Bay Passage  
 25 The vessel going out, has anchored  
 26 The vessel going out which anchored, is now under weigh  
 27 Vessel entering the River, has gone into Storm Bay Passage  
 28 Has hoisted out a boat



- 29 The boat has left the vessel
  - 30 A boat, not belonging to the vessel, is gone along-side
  - 31 The ship seen is gone into Frederick Henry Bay
  - 32 The brig seen is gone into ditto
  - 33 The sloop or schooner ditto
  - 34 The ship seen is gone into Adventure Bay
  - 35 Ditto brig ditto
  - 36 Ditto schooner or sloop ditto
  - 37 The vessel which went out, is returning into Port
  - 38 The pilot is on board, but has not made the signal
  - 39 The pilot has made signal where from, but so hazy I cannot see it distinctly
  - 40 The vessel is from England, with prisoners
  - 41 Is from England, with merchandize
  - 42 Has a person of consequence on board
  - 43 Is from Sydney
  - 44 From India
  - 45 Isle of France, Cape of Good Hope, or Brazil
  - 46 Is a whaler
  - 47 Is in distress
  - 48 Has a sickness on board
  - 49 A King's ship
  - 50 The same as reported yesterday
  - 51 The vessel is clear of the River
  - 52 Is out of sight
  - 53 The vessel signalized is abreast of Bruné Island
  - 54 Has a fair wind
  - 55 Is in distress or dismasted
  - 56 Requires immediate assistance
  - 57 The signal man wishes to communicate with an officer from the town
  - 58 Last signal was a mistake
  - 59 Annuls last signal
  - 60 Last question not understood.
- N. B.—A pendant hoisted (where the ball signifying 40 is hoisted) denotes "Yes."—Two ditto, "No." A ball hoisted at the top adds 40 to the number to be made. A pendant at the mast-head is an answer to denote a signal seen at Mount Louis.

## MOUNT NELSON.

### EXPLANATORY INSTRUCTIONS.

When a signal is made at Mount Louis, it is to be repeated by the telegraphs, for which purpose a copy of the Mount Louis signals is sent.

The telegraphic signals, No. 1, 2, 9, 10, 11, 22, 23, 24, 25, 26, 27, and 37, are altered, in order to correspond in repeating from Mount Louis.

Whenever a vessel is seen at Mount Nelson, No. 11 is to be made.—The flag at Mount Nelson is to be kept hoisted while a vessel is seen at either station, as at present.

In order to enable Mount Nelson to distinguish when two vessels are signaled, or are in sight at once, to which each signal made applies, one ball is to be used when more than one vessel is in sight, as follows:—

With each signal applying to the vessel FIRST reported—ball at the west yard-arm; with each signal applying to the vessel SECOND reported—ball at east yard-arm; with a signal applying to a vessel going out, when another is coming in—ball at centre of yard.—Ball to be lowered with each signal when answered. Mount Louis denotes to which vessel a signal applies, when two are in sight at once, by hoisting the flag with each signal.

Great attention when more than one vessel is in sight, to denote by the ball to which each signal applies.

### ADDITIONAL INSTRUCTIONS FOR THE SIGNAL MAN AT MULGRAVE BATTERY.

When more than one vessel is in sight, Mount Nelson will hoist a ball at the yard, with each telegraph signal, to denote to which vessel each signal applies;—

Ball at west yard-arm, denotes the signal to apply to vessel first reported.

Ball at east yard-arm, denotes the signal to apply to vessel second reported.

Ball at centre of yard, denotes the signal to apply to vessel going out.

N. B.—The balls will only be used when more vessels than one are in sight. The signal man at Mulgrave Battery must make his report accordingly, by adding thus, after the No. of the signal:—

1st Reported, or

2d Reported.

### SIGNALS

#### FOR THE SIGNAL POST AT MOUNT LOUIS.

##### EXPLANATORY INSTRUCTIONS.

The flag at this station is part of the signals, and is *not* to be kept flying while a vessel is in sight.—The flags are of two forms—the one square, to denote a vessel seen in Storm Bay; the other triangular, to denote a vessel in Storm Bay Passage. The flag is to be hauled down as soon as the signal is answered at Mount Nelson, by a pendant at the mast-head.

When more than one vessel is seen, the flag denoting the quarter is to be hoisted with each subsequent signal, in order to shew to which the signal applies.—Each signal to be kept up till answered by a pendant at Mount Nelson.

No. 1 Vessel in sight, in Storm Bay, between Cape Pillar and Bruné Island

2 Vessel in Storm Bay Passage

3 Bears northerly

4 Ditto southerly

5 Approaching the Port, or standing in

6 A ship

7 A brig

8 A schooner

9 A sloop

10 Government vessel

11 Belongs to the Colony

12 A King's ship

13 A whaler

14 Vessel coming in, has got into Storm Bay Passage

15 Pilot has got on board

16 Same as reported before, or yesterday

17 Vessel coming in, has anchored

18 Ditto coming in, which anchored, is under weigh and coming in

19 Ditto going out, has anchored

20 Ditto going out, which anchored, is under weigh and going out

21 Is returning into Port

22 Is out of sight

23 Last signal was a mistake

24 Ditto ditto, annulled

25 From England with prisoners

26 From ditto with merchandize


27 Has a person of consequence on board

28 From India

29 From Isle of France, Cape, or Brazil

30 A boat, not belonging to the vessel, has gone alongside

31 A boat has left the vessel.

 A copper-plate printed Table, shewing the several Positions of the Panes of the Telegraphs, will be published in this Almanack, along with the foregoing Signals, next Year.

#### Old Parr's Maxims of Health.

KEEP your FEET warm by EXERCISE, your HEAD cool through TEMPERANCE; never eat till you are hungry, nor drink but when Nature requires it.



## BANK HOLIDAYS.

JANUARY	1—New Year's Day. Anniversary of the opening of the Bank.
	29—Accession of His Majesty King George the Fourth.
MARCH	1—St. David's Day. 17—St. Patrick's Day.
APRIL	23—St. George's Day. 9—Lieutenant Governor's Sorell's Accession to the Government of Van Diemen's Land.
JULY	19—King George the Fourth's Coronation.
AUGUST	12—His Majesty's Birth Day.
NOV.	30—St. Andrew's Day.
DEC.	25—Christmas Day. 26—St. Stephen's Day.

When any of the above Holidays falls on a Sunday, it will be kept on the following Day.

Good Friday and Saturday following,  
Easter Monday and Tuesday,  
Whit Monday and Tuesday. } are Holidays.

Also, the Days in each Year appointed for the Half-yearly Meetings of the Court of Proprietors, for the announcing Dividends, Election of Directors, &c. will be held as Holidays at the Cash Office of the Bank.

ESTABLISHED RATES  
OF  
LABOURERS' WAGES.

	£	s.	d.
For falling forest timber, per acre .....	0	8	0
Burning off ditto, per ditto .....	1	0	0
Rooting out and burning stumps on forest ground, per ditto .....	1	10	0
Falling timber on brush ground, ditto..	0	12	0
Burning off ditto, per ditto .....	1	10	0
Rooting out and burning stumps on ditto, per ditto.....	1	17	6
Breaking up new ground, per ditto.....	1	0	0
Breaking up stubble or corn ground, per ditto .....	0	10	0
Chipping in wheat, per ditto .....	0	6	0
Reaping ditto, per ditto .....	0	10	0
Threshing and cleaning wheat, per bushel	0	0	8
Holing and planting corn, per acre....	0	5	0
Chipping and hilling corn, per ditto.....	0	6	8
Pulling and husking ditto, per bushel....	0	0	4
Splitting pales (6 feet long) per 100 ....	0	3	0
Ditto (5 feet long) per ditto .....	0	2	6
Shingle splitting, per 1000 .....	0	7	6
Preparing and putting up morticed railing, five bars, with two pannels to a rod, and posts sunk two feet in the ground ....	0	3	0
Ditto ditto, four bars .....	0	2	6
Ditto ditto, three bars .....	0	2	0
Ditto ditto, two bars .....	0	1	9

## APPENDIX.

—000—

The following alterations have occurred while the Almanack was in the Press:—

### *Secretary's Office.*

Principal Clerk—Henry J. Emmett, Gent.;  
Assistant ditto—Mr. Darley.

### *Magistrates.*

Clerk to the Bench at Hobart Town—Mr.  
John Abbott.

### *Distilleries and Breweries.*

Inspector of Distilleries and Breweries in the  
County of Buckinghamshire (acting).—Mr.  
John Welsh.

### *Retired Superannuated Officers, and Others receiving Pensions from the Colonial Revenue, in Consideration of their long Services to Government.*

Rev. Robert Knopwood, M. A. late Colonial Chaplain.  
Mr. Edward Luttrell, late Colonial Surgeon.  
Mr. T. R. Crowder, late Superintendent of Convicts.  
Mr. W. Patterson, late Wharfinger.  
Mr. H. Hacking, late Pilot.  
Mr. T. Fitzgerald, late Schoolmaster.

### *Additional Shipping Intelligence.*

FRANCIS, *brig*, Captain William Benson, bound from  
Port Jackson to Batavia, put into port, in stress of  
weather, December 29.—Sailed Dec. 30.

MARINER, *ship*, Captain Herbert, sailed for Batavia,  
December 28.

Vessels remaining in the harbour on the 31st Dec. :—  
*Sir Godfrey Webster* (ship); the brigs *Courier*, *Belinda*,  
*Jupiter*, and *Francis*.



**A READY RECKONER**  
OF THE  
**PRICES OF COMMODITIES,**  
*From a Pound Weight to a Ton.*

Per lb.	28 lbs.	112 lbs.	1 ton.
Pence.	£ s. d.	£ s. d.	£ s. d.
1 $\frac{1}{2}$	0 0 7	0 2 4	2 6 8
1 $\frac{1}{4}$	0 1 2	0 4 8	4 13 4
1 $\frac{3}{4}$	0 1 9	0 7 0	7 0 0
1	0 2 4	0 9 4	9 6 8
1 $\frac{1}{4}$	0 2 11	0 11 8	11 13 4
1 $\frac{1}{2}$	0 3 6	0 14 0	14 0 0
1 $\frac{3}{4}$	0 4 1	0 16 4	16 6 8
2	0 4 8	0 18 8	18 13 4
2 $\frac{1}{4}$	0 5 3	1 1 0	21 0 0
2 $\frac{1}{2}$	0 5 10	1 3 4	23 3 8
2 $\frac{3}{4}$	0 6 5	1 5 8	25 13 4
3	0 7 0	1 8 0	28 0 0
3 $\frac{1}{4}$	0 7 7	1 10 4	30 6 8
3 $\frac{1}{2}$	0 8 2	1 12 8	32 13 4
3 $\frac{3}{4}$	0 8 9	1 15 0	35 0 0
4	0 9 4	1 17 4	37 6 8
4 $\frac{1}{4}$	0 9 11	1 19 8	39 13 4
4 $\frac{1}{2}$	0 10 6	2 2 0	42 0 0
4 $\frac{3}{4}$	0 11 1	2 4 4	44 6 8
5	0 11 8	2 6 8	46 13 4
5 $\frac{1}{4}$	0 12 3	2 9 0	49 0 0
5 $\frac{1}{2}$	0 12 10	2 11 4	51 6 8
5 $\frac{3}{4}$	0 13 5	2 13 8	53 13 4
6	0 14 0	2 16 0	56 0 0
6 $\frac{1}{4}$	0 14 7	2 18 4	58 6 8
6 $\frac{1}{2}$	0 15 2	3 0 8	60 13 4
6 $\frac{3}{4}$	0 15 9	3 3 0	63 0 0
7	0 16 4	3 5 4	65 6 8
7 $\frac{1}{4}$	0 16 11	3 7 8	67 13 4

Per lb.	28 lbs.	112 lbs.	1 ton.
Pence.	£ s. d.	£ s. d.	£ s. d.
7 $\frac{1}{2}$	0 17 6	3 10 0	70 0 0
7 $\frac{3}{4}$	0 18 1	3 12 4	72 6 8
8	0 18 8	3 14 8	74 13 4
8 $\frac{1}{4}$	0 19 3	3 17 0	77 0 0
8 $\frac{1}{2}$	0 19 10	3 19 4	79 6 8
8 $\frac{3}{4}$	1 0 5	4 1 8	81 13 4
9	1 1 0	4 4 0	84 0 0
9 $\frac{1}{4}$	1 1 7	4 6 4	86 6 8
9 $\frac{1}{2}$	1 2 2	4 8 8	88 13 4
9 $\frac{3}{4}$	1 2 9	4 11 0	91 0 0
10	1 3 4	4 13 4	93 6 8
10 $\frac{1}{4}$	1 3 11	4 15 8	95 13 4
10 $\frac{1}{2}$	1 4 6	4 18 0	98 0 0
10 $\frac{3}{4}$	1 5 1	5 0 4	100 6 8
11	1 5 8	5 2 8	102 13 4
11 $\frac{1}{4}$	1 6 3	5 5 0	105 0 0
11 $\frac{1}{2}$	1 6 10	5 7 4	107 6 8
11 $\frac{3}{4}$	1 7 5	5 9 8	109 13 4
12	1 8 0	5 12 0	112 0 0

*Note.*—If the price per pound should exceed 12-pence, any half number doubled will give the amount; which renders it unnecessary to go beyond the sum of 12d. per lb.

**TABLE OF MEASURES AND WEIGHTS.**

<i>Ale and Beer Measure.</i>	4 Quarts 1 gallon
2 Pints make 1 quart	18 Gallons 1 rundlet
4 Quarts 1 gallon	2 $\frac{1}{2}$ Rundlets 1 barrel
8 Gallons 1 firkin of ale	1 $\frac{1}{4}$ Barrel 1 tierce
9 Gallons 1 firkin of beer	1 $\frac{1}{2}$ Tierce, or 63 gallons, 1 hogshead,
2 Firkins 1 kilderkin	1 $\frac{1}{2}$ Hogshead, or 84 gallons
3 Kilderkins 1 barrel	1 puncheon
3 Kilderkins 1 hogshead	1 Puncheon, or 2 hogsheads, 1 pipe or butt
3 Barrels 1 butt	2 Pipes 1 ton
<i>Wine Measure.</i>	
4 Gills make 1 pint	
2 Pints 1 quart	

*Corn Measure.*

- 2 Quarts make 1 pottle
- 2 Pottles 1 gallon
- 2 Gallons 1 peck
- 4 Pecks, or 8 gal. 1 bushel
- 8 Bushels 1 quarter or vat
- 5 Quarters of wheat, beans, or peas, 1 load
- 10 Quarters of oats 1 load

*Dry Measure.*

- 2 Pints make 1 quart
- 2 Quarts 1 pottle
- 2 Pottles 1 gallon
- 2 Gallons 1 peck
- 4 Pecks 1 bushel
- 8 Bushels 1 quarter
- 5 Quarters 1 weigh or load
- 5 Pecks 1 bushel of water measure
- 4 Bushels make 1 coomb
- 10 Coombs 1 weigh
- 2 Weighs 1 last of corn

*Coal Measure.*

- 4 Pecks make 1 bushel
- 9 Bushels 1 vat or strike
- 36 Bushels 1 chaldron
- 21 Chaldrons 1 score

*Cloth Measure.*

- 2½ Inches make 1 nail
- 4 Nails 1 quarter of a yard
- 4 Quarters 1 yard
- 5 Quarters 1 ell English
- 3 Quarters 1 ell Flemish
- 6 Quarters 1 ell French

*Long Measure.*

- 3 Inches make 1 palm
- 3 Palms 1 span
- 1 Span½, or 12 inches 1 foot
- 1½ Foot 1 cubit
- 2 Cubits 1 yard
- 1 Yard and ¾ 1 pace
- 1 Pace and 1-5th, or 6 feet 1 fathom
- 2 Fathoms and ¾ 1 pole
- 6½ Feet, or 5½ yards 1 pole

- 40 Poles 1 furlong
- 8 Furlongs 1 mile
- 3 Miles 1 League
- 20 Leagues 1 degree
- 69 Miles 1 geo. degree

*Square Measure.*

- 144 Square inches make one square foot
- 9 Square feet 1 square yard
- 30½ Square yards 1 squ. pole, perch or rod
- 40 Squ. poles 1 square rood
- 4 Squ. roods 1 square acre
- 640 Squ. acres 1 square mile

*Cubic Measure.*

- 1728 Cubic inches 1 foot
- 27 Cubic feet 1 cubic yard

*Avoirdupoise Weight.*

- 16 Drachms make 1 ounce
- 16 Ounces 1 pound
- 28 Pounds 1 quarter of a hundred
- 4 Quarters 1 hundred, or 112 lbs.
- 20 Hundred 1 ton

*Troy Weight.*

- 4 Grains make 1 carat
- 24 Grains 1 pennyweight
- 20 Pennyweights 1 ounce
- 12 Ounces 1 pound

*Apothecary's Weight.*

- 20 Grains make 1 scruple
- 3 Scruples 1 drachm
- 8 Drachms 1 ounce
- 12 Ounces 1 pound or pint

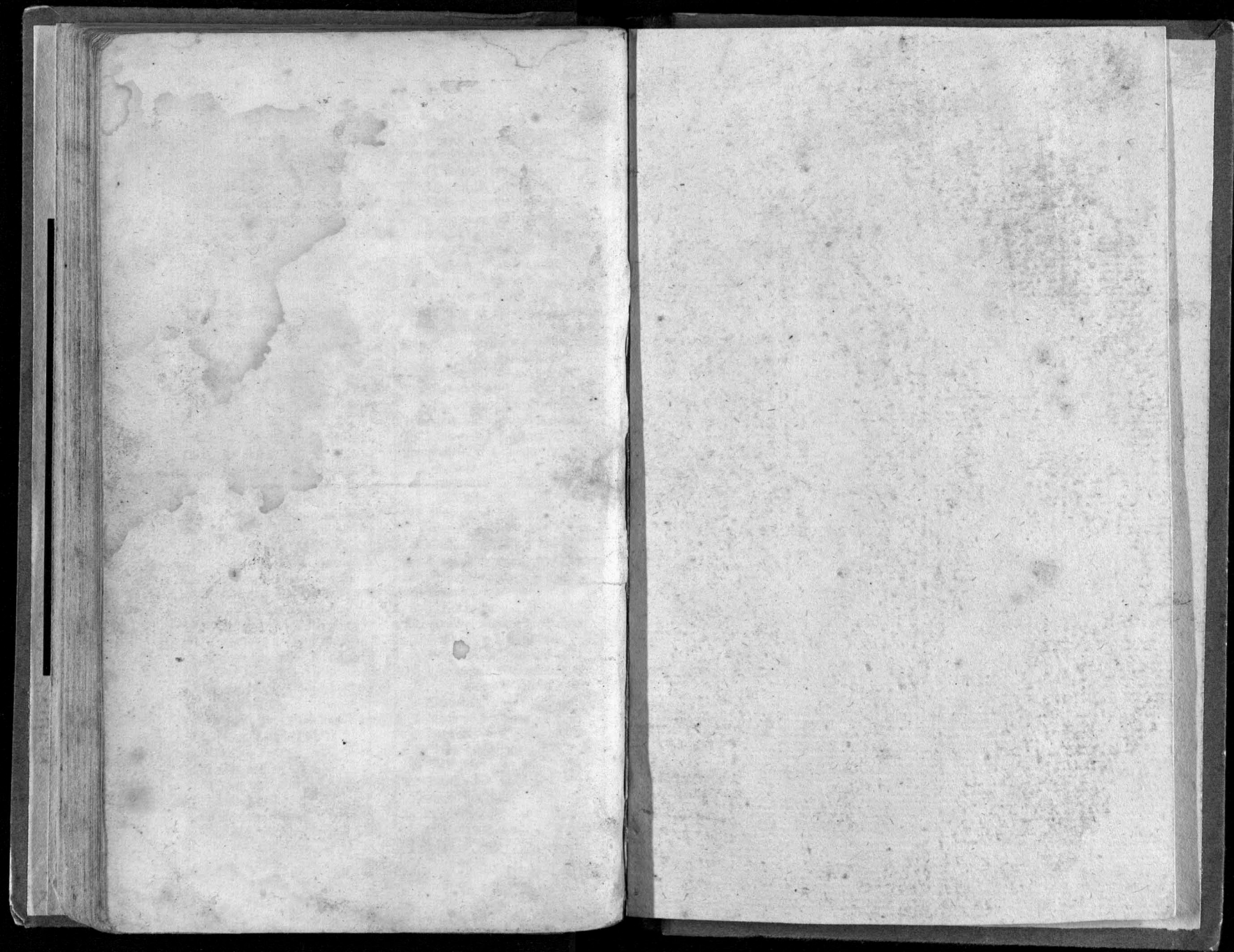
*Wool Weight.*

- 7 Pounds make 1 clove
- 2 Cloves 1 stone
- 2 Stone 1 tod
- 6½ Tod 1 weigh
- 2 Weighs 1 sack
- 12 Sacks 1 last

*Bread Weight.*

- A half peck..... 8 11 0
- A quarter..... 4 5 8





3/3/12



